



NerveCenter

Installing NerveCenter

**Unix and Windows
Version 4.1.03**

Copyright

Portions ©1989-2008 OpenService, Inc. All rights reserved.

Disclaimers

OpenService, Inc. (“OpenService”, “Open”) makes no representations or warranties, either expressed or implied, by or with respect to anything in this manual, and shall not be liable for any implied warranties of merchantability or fitness for a particular purpose or for any indirect, special or consequential damages.

These applications are available through separate, individual licenses. Not every feature or application described herein is licensed to every customer. Please contact OpenService if you have licensing questions.

No part of this publication may be reproduced, stored in a retrieval system or transmitted, in any form or by any means, photocopying, recording or otherwise, without prior written consent of OpenService. While every precaution has been taken in the preparation of this book, OpenService assumes no responsibility for errors or omissions. This publication and the features described herein are subject to change without notice.

The program and information contained herein are licensed only pursuant to a license agreement that contains use, reverse engineering, disclosure and other restrictions.

Trademarks

OpenService is registered in the U.S. Patent and Trademark Office. Security Threat Manager, NerveCenter, and the Open Logo are trademarks of OpenService, Inc.

All other products or services mentioned in this manual may be covered by the trademarks, service marks, or product names as designated by the companies who market those products.

OpenService, Inc.
67 Forest Street
Marlborough, MA 01752
Phone 508-597-5300
Fax 508-597-5399
<http://www.openservice.com>

1 Introduction

Overview of this book	2
NerveCenter Documentation	3
Using the Online Help	3
Printing the Documentation	3
The NerveCenter Documentation Library	4
UNIX Systems	5
Document Conventions	5
Documentation Feedback	7
OpenService Technical Support	7
Professional Services	7
Educational Services	7
Contacting the Customer Support Center	7
For Telephone Support	7
For E-mail Support	8
For Electronic Support	8
For Online KnowledgeBase Access	8

2 Installing NerveCenter on UNIX

Preparing to Install NerveCenter on UNIX	10
Running the Installation Script (Interactive)	14
Running the Installation Script (Automatic)	18
Additional Step for First-time, OVPA-only Installs	21
Viewing the Installation Log	21
Running the Installation Script to Reconfigure NerveCenter	22
Where to Go from Here	22

3 Running Setup on Windows

Preparing to Install NerveCenter on Windows	27
Starting the NerveCenter Setup Program	29
Starting the Installation	30

Accepting the License Agreement	31
Selecting the Components to Install	32
Configuring the Platform Adapter	33
Changing the Destination Directory or HP OpenView Path	34
Configuring the Service to Start Automatically	35
Entering a License Key	35
Configuring Security.	36
Trap Options	37
Letting Setup Install and Configure the Database	38
Selecting the Program Folder	39
Completing the Installation.	41
Where to Go from Here	42
4 Setting Up the Database on Windows	
Creating and Installing a New Database.	46
Creating a SQL Server Database.	49
Creating an Access Database.	54
Connecting to an Existing Database.	57
Connecting to a SQL Database	57
Connecting to an Access Database	61
5 Doing Silent and Remote Installations on Windows	
Creating a Source Directory	67
Editing the Installation Configuration File	68
Running Setup from the Command Line	75
Installing NerveCenter Remotely	75
Creating your Database from the Command Line	77
Configuring the Database Remotely.	81
Configuring NerveCenter Remotely.	82
6 Removing OpenService NerveCenter	
Removing NerveCenter from a UNIX Machine.	86
Removing NerveCenter from a Windows Machine	88
Index	91
OpenService Software License Agreement	95

Welcome to *Installing NerveCenter*. This chapter introduces the audience and purpose of this guide, and how you can best use it.

This chapter includes the following sections:

Section	Description
<i>Overview of this book on page 2</i>	Includes an overview of the contents of this guide and what you need to know before you use the guide.
<i>NerveCenter Documentation on page 3</i>	Lists and describes the components of the OpenService NerveCenter support system, including printed guides, online guides, help, and links to the OpenService NerveCenter Web site and the OpenService technical support Web site.
<i>OpenService Technical Support on page 7</i>	Describes how to access the NerveCenter knowledge base and other OpenService support services.

Overview of this book

Installing NerveCenter describes how to install and configure NerveCenter.

**NOTE**

It is assumed you are an experienced network administrator and are familiar with the platforms on which you are installing.

Installing NerveCenter contains the following sections:

Title	Description
<i>Chapter 2, Installing NerveCenter on UNIX</i>	Describes the prerequisites and procedures for installing NerveCenter on HP-UX and Solaris and lists the tasks you do after installation and where you can find more information about them.
<i>Chapter 3, Running Setup on Windows</i>	Describes the prerequisites and procedures for installing NerveCenter on Windows and lists the tasks you do after installation and where you can find more information about them.
<i>Chapter 4, Setting Up the Database on Windows</i>	Describes how to create a new database, upgrade an existing database, and connect to an existing database.
<i>Chapter 5, Doing Silent and Remote Installations on Windows</i>	Describes how to install NerveCenter on Windows by running Setup from the command line or by using Microsoft Systems Management Server.
<i>Chapter 6, Removing OpenService NerveCenter</i>	Describes how to remove NerveCenter from UNIX and Windows platforms.

NerveCenter Documentation

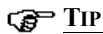
This section describes the available NerveCenter documentation, which explains important concepts in depth, describes how to use NerveCenter, and provides answers to specific questions.


The documentation set is provided in online (HTML) format, as well as PDF for printing or on-screen viewing. See the following topics for more information:

- ◆ *Using the Online Help on page 3*
- ◆ *Printing the Documentation on page 3*
- ◆ *The NerveCenter Documentation Library on page 4*
- ◆ *UNIX Systems on page 5*
- ◆ *Document Conventions on page 5*
- ◆ *Documentation Feedback on page 7*

Using the Online Help

You can use Microsoft Internet Explorer, Mozilla, or Netscape Navigator to view the documentation. Refer to the *NerveCenter 4.1.03 Release Notes* for the browser versions supported with this release.

**TIP**

For in-depth instructions on using the online documentation, click the Help button  in the upper right of the Help window.

Printing the Documentation

The NerveCenter documentation is also available as Portable Document Format (PDF) files that you can open and print. All PDF files are located in your *installpath/doc* directory.

**NOTE**

You must have Adobe Acrobat Reader to open or print the PDF files. You can download the Reader free from Adobe's Web Site at <http://www.adobe.com>.

The NerveCenter Documentation Library

The following documents ship with NerveCenter.

Book Title	Description	Application	Audience	PDF for Print
<i>NerveCenter 4.1.03 Release Notes</i>	Describes new NerveCenter features and includes late-breaking information, software support, corrections, and instructions.	All	All	relnotes.pdf
<i>Getting a Quick Start with NerveCenter</i>	Provides a preview prior to installing and configuring NerveCenter for your network. Takes approximately one to two hours to complete.	All	New users	QuickStart.pdf
<i>Upgrading NerveCenter</i>	Explains how to upgrade your current NerveCenter version.	All	Installation team	upgrading.pdf
<i>Installing NerveCenter</i>	Helps you plan and carry out your NerveCenter installation. Use the <i>Release Notes</i> in conjunction with this book.	All	Installation team	install.pdf
<i>Managing NerveCenter</i>	Explains how to customize and tune NerveCenter after it has been installed.	NerveCenter Administrator	Administrator	managing_nervecenter.pdf
<i>Integrating NerveCenter with a Network Management Platform</i>	Explains how to integrate NerveCenter with network management platforms.	NerveCenter Administrator	Administrator	integratingNC.pdf
<i>Learning How to Create Behavior Models</i>	Provides step-by-step instructions and examples for creating behavior models.	NerveCenter Client	Users with administrative privileges	learningModel.pdf
<i>Designing and Managing Behavior Models</i>	Explains behavior models in depth, how to create or modify models, and how to manage your models.	NerveCenter Client	Users with administrative privileges	designingModels.pdf
<i>Monitoring Your Network</i>	Explains how NerveCenter works and how you can most effectively monitor your network.	NerveCenter Client and Web Client	Users	monitoringNet.pdf

Book Title	Description	Application	Audience	PDF for Print
<i>Behavior Models Cookbook</i>	Describes each behavior model shipped with OpenService NerveCenter.	NerveCenter Client	Users with administrative privileges	modsCookbook.pdf
Quick reference cards	Quick reference cards provide convenient reference material for common NerveCenter tasks. The following cards are provided (PDF only): <ul style="list-style-type: none"> ◆ Monitoring NerveCenter reference. ◆ Installing NerveCenter reference. ◆ Using Behavior Models reference. 	NerveCenter Client and Administrator	All	quickreference.pdf

UNIX Systems

On UNIX systems, NerveCenter man pages provide command reference and usage information that you view from the UNIX shell as with other system man pages. When you specify documentation during NerveCenter installation, the script installs nroff-tagged man pages and updates your system's MANPATH environment variable to point to the NerveCenter man page directory.

Document Conventions

This document uses the following typographical conventions:

Element	Convention	Example
Key names, button names, menu names, command names, and user entries	Bold	Press Tab Enter ovpa -pc
◆ A variable you substitute with a specific entry	<i>Italic</i>	Enter <i>./installdb -f IDBfile</i>
◆ Emphasis		
◆ Heading or Publication Title		

Element	Convention	Example
Code samples, code to enter, or application output	Code	<code>iiifInOctets > 0</code>
Messages in application dialog boxes	Message	Are you sure you want to delete?
An arrow (>) indicates a menu selection	>	Choose Start > Programs > OpenService NerveCenter
A link to a section in the same book	<i>Blue Italic</i>	For more information, see <i>Correlating Conditions</i> .
A link to a section in a different book	<i>Green Italic</i>	For more information, see <i>Correlating Conditions</i> in <i>Monitoring Your Network with NerveCenter</i> .
<p>Note: If you are viewing this document in a PDF viewer, you may need to use the Go to Previous View button to return to the original PDF file.</p>		

**CAUTION**

A caution warns you if a procedure or description could lead to unexpected results, even data loss, or damage to your system. If you see a caution, proceed carefully.

**NOTE**

A note provides additional information that might help you avoid problems, offers advice, and provides general information related to the current topic.

**TIP**

A tip provides extra information that supplements the current topic. Often, tips offer shortcuts or alternative methods for accomplishing a task.



If toolbar buttons are available, they are displayed in the margin next to the step in which you can use them. Other shortcuts are noted as tips. Also, shortcut (accelerator) keys are displayed on application menus next to their respective options.

Documentation Feedback

OpenService, Inc. is committed to providing quality documentation and to helping you use our products to the best advantage. If you have any comments or suggestions, please send your documentation feedback to:

Documentation
OpenService, Inc.
67 Forest Street
Marlborough, MA 01752

documentation@openservice.com

OpenService Technical Support

OpenService is committed to offering the industry's best technical support to our customers and partners. You can quickly and easily obtain support for NerveCenter, our proactive network management software, or SMC, our security threat management suite.

Professional Services

OpenService offers professional services when customization of our software is the best solution for a customer. These services enable us, in collaboration with our partners, to focus on technology, staffing, and business processes as we address a specific need.

Educational Services

OpenService is committed to providing ongoing education and training in the use of our products. Through a combined set of resources, we can offer quality classroom style or tailored on-site training.

Contacting the Customer Support Center

For Telephone Support

Phone: 1-800-892-3646 or 1-508-597-5300

For E-mail Support

E-mail: techsupport@openservice.com.

For Electronic Support

OpenService has a Web-based customer call tracking system where you can enter questions, log problems, track the status of logged incidents, and check the knowledge base.

When you purchased your product and/or renewed your maintenance contract, you would have received a user name and password to access the OpenService Call Tracking System using TeamShare. You may need to contact your contracts or NerveCenter administrator for the username and password for your account with TeamShare.

If you have not received or have forgotten your log-in credentials, please e-mail us with a contact name and company specifics at techsupport@openservice.com.

We are committed to providing ongoing education and training in the use of our products. Through a combined set of resources, we offer quality training to our global customer base.

For Online KnowledgeBase Access

For additional NerveCenter support information, please go the OpenService website <http://www.openservice.com> for access to the following sections of information:

- ◆ **Patches and Updates** - latest installation files, patches, and updates including documentation for NerveCenter.
- ◆ **Software Alerts** - latest software alerts relative to NerveCenter.
- ◆ **KnowledgeBase Search** - search the NerveCenter KnowledgeBase for answers to your questions whether relating to the installation, usage, or operation of NerveCenter.

Installing NerveCenter on UNIX

Follow the instructions in this chapter to use the NerveCenter™ installation script to install the NerveCenter components listed in *Table 2-1*:

TABLE 2-1. NerveCenter Components

Component	Description
NerveCenter Client	Lets you monitor your network, as well as design and manage behavior models.
NerveCenter Administrator	Lets you configure NerveCenter.
NerveCenter Server	Carries out all major tasks, including polling SNMP agents, triggering alarms, and making sure that alarm transitions occur.
Platform Adapters	Integrate NerveCenter with supported network management platforms. (See the <i>NerveCenter 4.1.01 Release Notes</i> for a complete list.)
NerveCenter Web support	Integrates NerveCenter with supported Web servers. (See the <i>NerveCenter 4.1.01 Release Notes</i> for a complete list.)
Online documentation	Provides the NerveCenter library in HTML with a full-text search engine. (PDF versions are also installed for printing.)

You can install the components on any machine that meets the configuration requirements. (See *NerveCenter 4.1.01 Release Notes*.) For information about upgrading from an older version of NerveCenter, see *Upgrading NerveCenter*.



CAUTION

Before you install NerveCenter, make sure you meet the prerequisites. See *Preparing to Install NerveCenter on UNIX on page 10*.

This chapter includes the following sections:

Section	Description
<i>Preparing to Install NerveCenter on UNIX on page 10</i>	Describes how to prepare the machine on which you are going to install NerveCenter.
<i>Running the Installation Script (Interactive) on page 14</i>	Describes how to run the installation script and respond to prompts.
<i>Running the Installation Script (Automatic) on page 18</i>	Describes how to create and use an input file to provide answers to the installation script prompts automatically.
<i>Viewing the Installation Log on page 21</i>	Describes how to open the installation log so you can troubleshoot problems or view which options were chosen during installation.
<i>Running the Installation Script to Reconfigure NerveCenter on page 22</i>	Describes how to rerun a portion of the installation script to reconfigure NerveCenter after the initial installation.
<i>Where to Go from Here on page 22</i>	Describes what to do after completing the installation.

Preparing to Install NerveCenter on UNIX

Before you install NerveCenter, you must set up the environment by backing up existing NerveCenter files, stopping processes, creating users and groups, and configuring services.



NOTE

You cannot install multiple versions of NerveCenter on the same machine. Only one version can be installed on a machine.

Before you prepare the machine, make sure you meet the prerequisites in [Table 2-2](#):

TABLE 2-2. Prerequisites for Installing NerveCenter on UNIX

If you are installing...	You must...
Over an existing version of NerveCenter	See <i>Upgrading NerveCenter</i> for more information about upgrading from version 4.0 to version 4.1. You must uninstall prior versions of NerveCenter before installing NerveCenter 4.1.

TABLE 2-2. Prerequisites for Installing NerveCenter on UNIX (Continued)

If you are installing...	You must...
Any NerveCenter component	<ul style="list-style-type: none"> ◆ The computers where you'll install NerveCenter must meet the system requirements for your environment, as described in the <i>NerveCenter 4.1.01 Release Notes</i>. ◆ Have X-Windows software with Motif or CDE to run the following NerveCenter components: Client, Administrator, and SerializedDB. An X server must be installed but does not have to be running to run the following NerveCenter components: Server, Command Line Interface (CLI), Importutil, and IPSweep. The DISPLAY variable must point to a valid X display for the following NerveCenter components: Client, Administrator, IPSweep, and SerializedDB ◆ Have root privileges to run the installation script.
NerveCenter Server	<ul style="list-style-type: none"> ◆ The process /usr/sbin/rpcbind must be running for NerveCenter Server to start. ◆ Installing a NerveCenter Server on the same machine as IBM NetView is not supported.
The OpenView Platform Adapter	<ul style="list-style-type: none"> ◆ Install and start the HP trap service (ovtrapd). ◆ Have HP OpenView or IBM NetView running on this machine. If HP OpenView is running on a Windows system, you will need to install the OpenView Platform Adapter on that system. ◆ <i>PlatformPath</i> and <i>PlatformBinPath</i> refer to the fully qualified path names of the network management platform installation directory and the directory containing all the platform executables, respectively (for example, /opt/OV and /opt/OV/bin).
The Universal Platform Adapter	<p>Have either IBM Tivoli Netcool/Omnibus (including the NerveCenter probe) or IBM Tivoli TME 10 installed on this machine.</p> <p>Note: You must get the NerveCenter probe, which is a IBM Tivoli product, from IBM Tivoli.</p>
Web server	<p>If you are installing Web support, you don't have to install any NerveCenter components on the Web server itself. However, you do need to be familiar with the Web server, its location, and its configuration files.</p>

TABLE 2-2. Prerequisites for Installing NerveCenter on UNIX (Continued)

If you are installing...	You must...
CD-ROM drive	Make sure that the workstation that will be the OpenService NerveCenter Client or Server host is the same type of workstation as the one connected to the CD-ROM drive you'll use during installation. For example, if you're installing OpenService NerveCenter on an HP workstation, make sure the CD-ROM drive is attached to an HP workstation.

TO SET UP YOUR MACHINE

1. On the system where you plan to install OpenService NerveCenter, log in as root.
2. If NerveCenter is already installed on this machine, stop all NerveCenter and Wind/U processes. See *Upgrading NerveCenter*.

If any of these processes are still running when you start the installation script, the script will quit and display a list of the processes you must stop. Once you have stopped the processes, you can rerun the script.

3. If NerveCenter is already installed on this machine, back up any files that you have customized for your business or your environment. See *Upgrading NerveCenter*.
4. You must uninstall NerveCenter before installing NerveCenter 4.1.03. See *Removing OpenService NerveCenter on page 85* or *Upgrading NerveCenter*.
5. If the following two groups don't already exist, create them: **ncadmins** and **ncusers**.

**CAUTION**

Do not create these groups on the NIS client machine. If you do, you will not be able to log in to the NerveCenter Server on that machine.

6. Create a new user, **nervectr**, that is a member of the group **ncadmins**.

**NOTE**

Create the **nervectr** user in the NIS database if the machine running the NerveCenter Server is using NIS for user authentication.

7. If you are installing NerveCenter on HP-UX, make sure that HP Services is configured to search both `/etc/services` and NIS by doing the following:
 - a. Run **sam** and choose **Network and Communications**.
 - b. Choose **Name Service Switch**.

- c. Make sure the services line includes entries for NIS and `/etc/services`.
 - d. Select the **services** line.
 - e. Right click the **services** line and select **Configure Name Service Switch**.
 - f. In the window displayed, set **If Information is Not Found to Try Next Source**.
8. If you are installing NerveCenter on HP-UX, make sure the kernel parameter, `nfile`, is set to at least 1000 to allow more open files:
- a. Run `sam` and choose **Kernel configuration**.
 - b. Then choose **Configuration parameters**.
 - c. Set `nfile` to at least **1000**.
9. If you are installing NerveCenter on HP-UX, make sure the kernel parameter, `maxfiles`, is set to at least 200:
- a. Run `sam` and choose **Kernel configuration**.
 - b. Then choose **Configuration parameters**.
 - c. Set `maxfiles` to at least **200**.
-

Once you have finished configuring the system, you can install NerveCenter.

Running the Installation Script (Interactive)

The installation script prompts you with a series of questions. You can:

- ◆ Press **Enter** to accept the default value (displayed between brackets []).
- ◆ Enter **y** for yes, **n** for no, or **q** to quit the installation.
- ◆ Enter a question mark (?) to get help.
- ◆ Type **Ctrl+c** to terminate the installation immediately.



NOTE

When you are prompted for the name of a directory, you must enter the full path name. Characters such as the tilde (~) are not recognized.

If an error occurs during the installation process, the script will tell you what to do.

TO RUN THE INSTALLATION SCRIPT

1. If you haven't done so already, shut down all NerveCenter processes.
2. Mount the NerveCenter CD-ROM.
3. Navigate to *mountpoint*/**BIN**.
4. Enter the following command:

```
./INSTALL.SH
```



NOTE

On HP-UX, type `./INSTALL.SH\;1`.

The script begins to run.

5. At the following prompt, press Enter to accept the default installation directory or enter a new one.

```
Where do you want to install NerveCenter? [/opt/OSInc]
```



NOTE

If you are installing over an existing `/opt/OSInc` directory, the install script backs the existing files up to `/opt/OSInc.sav`.

6. If the directory does not already exist, answer **y** to the following prompt:

Directory /opt/OSInc doesn't exist.....Shall I create it ? [y]

7. Type the letter for each component you want to install (separating each one with a space), then press Enter.

Letter	Component	Notes
c	Client	Install if you want to be able to monitor the network and create or modify behavior models from this system. No other NerveCenter components have to be installed on this system.
w	Web server integration	Install if you want to be able to use the Web Client from any system connected to the network. We recommend that you install this component on the system on which the web server is installed; however, doing that is not required.
a	Administrator	Install if you want to be able to customize NerveCenter from this system. No other NerveCenter components have to be installed on this system.
s	Server	Install if you want to have the main NerveCenter pieces, including the NerveCenter database and other primary files, located on this system. Note: Installing the NerveCenter Server on a machine running IBM NetView is not supported.
d	Online documentation	We recommend always installing the online documentation, because all of your command line switches, procedures, and so on, are documented there.
o	OpenView or NetView integration	Do not install if you plan on using the NerveCenter IPSweep model instead of getting node information from OpenView or NetView. OpenView or NetView must be installed on this system and must be running.
n	Netcool integration	Netcool should be installed on this system.
t	Tivoli integration	Tivoli must be installed on this system.
l	All	

**NOTE**

The script will quit if any of the following conditions are true: you did not create the required users and groups, there is not enough space in this directory, some NerveCenter processes are still running. Correct the condition (create the users, create some more space, or stop the processes) and rerun the installation script. See *Preparing to Install NerveCenter on UNIX on page 10* for details.

The script lists each file as it is extracted.

If you are installing the OpenView integration, be sure to go to *Additional Step for First-time, OVPA-only Installs on page 21* and follow the additional instructions if you are running NIS.

8. At the following prompt, press **Enter** to accept the default path or enter a different path.

```
Enter the path of the X motif libraries. [/usr/dt/lib]
```

9. If the installation script indicates that you need to update the services file, type **y** and then press **Enter** at the following prompt. Otherwise, just press **Enter**.

```
Do you want to update the services file ? [n] n
```

10. At the following prompt, type your license key and press **Enter**.

```
Enter the license Key []
```

**NOTE**

If you leave the license key empty, you can start the server and connect to it from the administrator to add the key later. If you have multiple keys, enter one here and use `importutil` or the administrator to add the others later.

11. If you are installing platform integration for OpenView, press **Enter**. If you are not, skip to the next step.

```
Do you wish to configure NerveCenter integration with OpenView on
this system ? [y]
```

12. At the following prompt, press **Enter** if you are not running co-resident. If you are running both NerveCenter and HP OpenView on this system, type **y** and press **Enter**.

```
Will you be running NerveCenter co-resident with OpenView on this
system?
Enter your choice [n]
```

13. At the following prompt, type the full path and executable name of your HTML browser (`/usr/netscape/netscape`, for example).

**CAUTION**

If you do not enter a path to a browser, you will not be able to view the NerveCenter Help. For a list of supported browsers, see [Software Requirements in NerveCenter 4.1.01 Release Notes](#).

Enter the path and the name of your browser : [.]

14. At the following prompt, press Enter to configure the server so you have to start it manually. To configure the server as a daemon so it starts automatically when you reboot the system, type y and press Enter.

You can start NerveCenter server as a daemon. If you do, NerveCenter server will start automatically when you reboot the system.
Enter your choice [y]

15. At the following prompt, press Enter to configure web server integration.

Do you want to configure web server integration ?
Enter your choice [y]

**NOTE**

If your Web server is on a different machine, you must configure the Web server yourself. See [Managing NerveCenter Web Integration in Managing NerveCenter](#) for details.

16. At the following prompt, type the appropriate number for the web server with which you want to integrate NerveCenter. Then, press Enter.

Please enter the web server : [1]

17. If you are installing web integration, follow the prompts to configure your web server. For example, to integrate NerveCenter with Apache, do the following when you are prompted:
 - a. Enter the path to the Apache web server configuration directory (the directory containing httpd.conf and srm.conf).
 - b. Enter the path to the Apache web server pid file location.
 - c. Confirm that you want the installation script to modify the Apache configuration file.
The script backs up the original file in the /apache/conf directory as srm.conf.NCbak.
 - d. Decide whether you want to restart the web server now. (If not, remember to do so later.)
 - e. Decide whether to configure NerveCenter webcollector as a daemon to start when the system reboots.

18. If you are installing the universal platform adapter for integration with IBM Tivoli Netcool/OMNIbus or IBM Tivoli TME, the following prompt lets you specify whether to install it as a daemon.

You may choose to start NerveCenter PA Server at system startup. Choosing to do so will bring up the NerveCenter PA Server when the system boots the next time.

Enter your choice [n]

19. When the installation script finishes, source the appropriate `ncenv` shell script in `/opt/OSInc/userfiles` for the shell you are running.

**CAUTION**

You must source this file to be able to run NerveCenter. Add the lines from these files to the login scripts for all users who are going to be starting NerveCenter applications on UNIX.

You have installed NerveCenter.

Running the Installation Script (Automatic)

If you want to install NerveCenter without having to answer each prompt one at a time, you can modify the `ncinput` file provided with NerveCenter and run the install script so it uses that file to get your answers.

TO RUN THE INSTALLATION SCRIPT

1. If you haven't done so already, shut down all NerveCenter processes.
2. Mount the NerveCenter CD-ROM.
3. Navigate to `mountpoint/bin`.
4. Copy `ncinput` to your local system.
5. Open `ncinput` in a text editor.
6. Edit `ncinput`, using the examples in the file as a guide.

You can delete sections or options that do not apply to the components you are installing or for which you want to accept the defaults; however, some options are required. If you delete those options, your installation will fail.

Table 2-3 describes the sections in the input file. Also refer to *Running the Installation Script (Interactive)* on page 14 for more detailed explanations of the various options.

 **TIP**

You can add comments (or comment sections out) by starting the line with a hash mark (#).

TABLE 2-3. Sections in the Input File

Description	Options
Edit this section to change general options, such as the installation directory, the components you want to install, the path of your browser, and so on.	<ul style="list-style-type: none"> ◆ InstallDirectory=<i>installation_path</i> (required) ◆ CreateInstallDir=<i>y_or_n</i> (if not specified, the default is <i>y</i>) ◆ InstallOption=<i>letter_for_each_option_separated_by_space</i> (required) ◆ Overwrite=<i>1_to_overwrite_or_2_not_to</i> (if not specified, the default is 1) ◆ LicenseKey=<i>32-digit_license_key</i> (if not specified, the license key is left blank) ◆ BrowserPath=<i>path_and_filename_of_browser</i> (if not specified, the default is “.” for no browser)
Edit this section to change whether the server, platform adapter, or web collector run as daemon processes.	<ul style="list-style-type: none"> ◆ NCServerDaemon=<i>y_or_n</i> (if not specified, the default is <i>n</i>) ◆ PAServerDaemon=<i>y_or_n</i> (if not specified, the default is <i>n</i>) ◆ WebCollectorDaemon=<i>y_or_n</i> (if not specified, the default is <i>n</i>)
Edit this section to configure web integration.	<ul style="list-style-type: none"> ◆ ConfigureWebServer=<i>y_or_n</i> (if not specified, the default is <i>y</i>) ◆ DefaultWebServer=<i>1_for_apache_2_for_fasttrack_3_for_other</i> (required if configuring web support) ◆ ApacheWebServerConfig=<i>path_to_apache_conf_file</i> (required if configuring Apache) ◆ ApacheWebServerPID=<i>path_to_apache_logs_dir</i> (required if configuring Apache) ◆ FTWebServerConfig=<i>path_to_fasttrack_config_file</i> (required if configuring FastTrack) ◆ ModifyWebConfigFile=<i>y_or_n</i> (if not specified, the default is <i>y</i>) ◆ RestartWebServer=<i>y_or_n</i> (if not specified, the default is <i>n</i>)
Edit this section to address NIS server issues.	<ul style="list-style-type: none"> ◆ NISConfig=<i>y_or_n</i> (if not specified, the default is <i>n</i>) ◆ NISMasterServer=<i>machine_name</i> (required if configuring NIS)

TABLE 2-3. Sections in the Input File (Continued)

Description	Options
Edit this section to configure the OpenView Platform Adapter (OVPA).	<ul style="list-style-type: none"> ◆ ConfigureOV=<i>y_or_n</i> (if not specified and OpenView is installed, the default is <i>y</i>) ◆ NC-OV_CoRes=<i>y_or_n</i> (if not specified, the default is <i>n</i>) ◆ OVWLaunchClient=<i>y_or_n</i> (if not specified, the default is <i>y</i>) ◆ OVWLaunchServer=<i>y_or_n</i> (if not specified, the default is <i>y</i>) ◆ Configure-LAA-OPC=<i>y_or_n</i> (if not specified and IT/Operations is installed, the default is <i>y</i>) ◆ OPC-HOST=<i>machine_name</i> (required if configuring integration with IT/Operations)
Edit this section to enable NerveCenter to accept SNMP v3 traps	<ul style="list-style-type: none"> ◆ NC-SNMPv3_Enabled=<i>y_or_n</i> (if not specified, the default is <i>y</i>)

7. Save `ncinput`.

8. From the bin directory, enter the following command:

```
./INSTALL.SH path/ncinput
```



NOTE

On HP-UX, type `./INSTALL.SH\;1 path/ncinput`

path is the full path to the directory where you saved your edited `ncinput` file.

The script runs. NerveCenter is installed.

If, for any reason, the installation fails, view the log file to see what messages were generated. For more information, see [See Viewing the Installation Log on page 21](#).

Additional Step for First-time, OVPA-only Installs

For a first-time, OVPA-only install, users must add one or both of the following two lines to their local `/etc/services` file (or the `/etc/services` file on the NIS server, if running NIS):

```
nl-nc-opc-adapt 6028/tcp
nl-nc-plat-adapt 6024/tcp
```

The first line applies to Operations Center and ITO adapters. The second line applies to OpenView platform adapters. Editing the services file requires root privileges on the host platform.

If you are making these changes on an NIS server, you will need to run 'make services' from the `/var/yp` directory to push the changes out to NIS clients.

These entries tell the platform adapters which TCP port to open for communications with NerveCenter Servers. If the required entry or entries is absent, the platform adapter will exit on startup with an Accept Socket Error.

Viewing the Installation Log

If you need to troubleshoot the installation or if you just want to review what options you specified, you can view the installation log. The installation log contains the full installation script, your answers, and the list of files that were installed.

TO VIEW THE LOG FILE:

- ◆ Open `/opt/OSInc/ncinst_log` in a text editor or viewer.
-

Running the Installation Script to Reconfigure NerveCenter

If you need to reconfigure NerveCenter, you can rerun part of the installation script from the machine on which you installed NerveCenter.

TO RUN THE INSTALLATION SCRIPT

1. If you haven't already done so, shut down all NerveCenter processes.
2. Navigate to `/opt/OSInc/nc/install`.
3. Enter the following command:

```
./setup.sh
```

The script begins to run. For explanations of the prompts, see [Running the Installation Script \(Interactive\)](#) on page 14.

Where to Go from Here

After you finish the installation, you must do the following before you use NerveCenter on UNIX:

TABLE 2-4. Post-Installation Configuration Steps

If you...	You must...	For details, see...
Left the License Key empty	Start the server, use the administrator to connect to the server, and enter a license key.	<i>Working with NerveCenter Serial Numbers in Managing NerveCenter</i>
Are ready to start and configure NerveCenter	Start the server, use the administrator to connect to the server, and configure your node source, inform hosts, email notification, and so on.	<i>Connecting to a NerveCenter Server in Managing NerveCenter</i>
Chose to install a platform adaptor to integrate NerveCenter with a network management platform	Configure NerveCenter and your network management platform to work together.	<i>Integrating NerveCenter with a Network Management Platform</i>

TABLE 2-4. Post-Installation Configuration Steps (Continued)

If you...	You must...	For details, see...
Chose to integrate NerveCenter with IBM Tivoli Netcool/Omnibus, but installed on a different machine than Netcool	Change the platform adapter's nhost setting to reflect the Netcool host machine.	<i>Integrating NerveCenter with Micromuse Netcool/OMNibus in Integrating NerveCenter with a Network Management Platform</i>
Installed Web support, but the Web server is on another machine	Set up the URL map manually.	<i>Managing NerveCenter Web Integration in Managing NerveCenter</i>
Installed Web support	Make sure that users have appropriate access to the Web server.	Your Web server documentation
Changed the default directory and you plan on using the IPSweep behavior model	Modify the IPSweep alarm to use the new path.	<i>Using NerveCenter's IPSweep Behavior Model in Designing and Managing Behavior Models</i>

2

Installing NerveCenter on UNIX

Follow the instructions in this chapter to use the NerveCenter Setup program to install the NerveCenter components listed in [Table 3-1](#):

TABLE 3-1. NerveCenter Components

Component	Description
NerveCenter Client	Lets you monitor your network, as well as design and manage behavior models.
NerveCenter Administrator	Lets you configure NerveCenter.
NerveCenter Server	Carries out all major tasks, including polling SNMP agents, triggering alarms, and making sure that alarm transitions occur.
Platform Adapters	Integrate NerveCenter with supported network management platforms. (See the NerveCenter 4.1.01 Release Notes for a complete list.)
NerveCenter Web support	Integrates NerveCenter with supported Web servers. (See the NerveCenter 4.1.01 Release Notes for a complete list.)
Online documentation	Provides the NerveCenter library in HTML with a full-text search engine. (PDF versions are also installed for printing. See readme.txt in the docs directory for more information.)

You can install the components on any machine that meets the configuration requirements. (See the [NerveCenter 4.1.01 Release Notes](#).) For information about upgrading from an older version of NerveCenter, see [Upgrading NerveCenter](#).



CAUTION

Before you install NerveCenter, make sure you meet the prerequisites. See [Preparing to Install NerveCenter on Windows on page 27](#).

Instead of using the NerveCenter Setup GUI, you can take advantage of two other installation options: *silent* or *remote*. You can do a silent installation by editing NerveCenter configuration information in a text file, then running Setup from the command line. To do remote installations, you can use Microsoft Systems Management Server (SMS) tools. See [Doing Silent and Remote Installations on Windows on page 65](#)

This chapter includes the following sections:

Section	Description
<i>Preparing to Install NerveCenter on Windows on page 27</i>	Lists the prerequisites for installing NerveCenter on Windows.
<i>Starting the NerveCenter Setup Program on page 29</i>	Describes how to start Setup from the Windows Add/Remove Programs applet.
<i>Starting the Installation on page 30</i>	Provides general recommendations and instructions for running Windows Setup programs.
<i>Accepting the License Agreement on page 31</i>	Displays the license agreement. You must accept it before you can install NerveCenter.
<i>Selecting the Components to Install on page 32</i>	Describes how to select NerveCenter components to install.
<i>Configuring the Platform Adapter on page 33</i>	Describes how to select the platform adapters.
<i>Changing the Destination Directory or HP OpenView Path on page 34</i>	Describes how to change where Setup installs NerveCenter and where HP OpenView is installed.
<i>Configuring the Service to Start Automatically on page 35</i>	Describes why you would want to configure the service to start automatically when the machine reboots and how to do so.
<i>Entering a License Key on page 35</i>	Describes how to add a license key.
<i>Trap Options on page 37</i>	Describes how to enable NerveCenter to process SNMP v3 traps.
<i>Configuring Security on page 36</i>	Describes how to let Setup configure NerveCenter security.
<i>Letting Setup Install and Configure the Database on page 38</i>	Describes how to specify whether Setup automatically launches the database wizard after installation.
<i>Selecting the Program Folder on page 39</i>	Describes how to create a NerveCenter program group.
<i>Completing the Installation on page 41</i>	Describes how to finish the installation.
<i>Where to Go from Here on page 42</i>	Describes what to do after completing the installation.

Preparing to Install NerveCenter on Windows



NOTE

You cannot install multiple versions of NerveCenter on the same machine. Only one version can be installed on a machine.

Before you install NerveCenter, make sure you meet these prerequisites:

TABLE 3-2. Prerequisites for Installing NerveCenter on Windows

If you are installing...	You must...
NerveCenter 4.1.03 over a previous version of NerveCenter	<ul style="list-style-type: none"> ◆ Export any behavior models that you need to be able to use with previous versions. ◆ Back up files that you have modified (such as MIB files, or your database). ◆ You must uninstall any prior version of NerveCenter before installing NerveCenter 4.1.03. <p>See <i>Upgrading NerveCenter</i> for more information about upgrading from version 4.0 to version 4.1.03.</p>
Any NerveCenter component	<ul style="list-style-type: none"> ◆ Be a Windows Administrator. If you are installing on a Windows workstation or server, you must be a member of the local Administrators group (or a member of a group that is a member of the local Administrators group). View the Local Group Properties window for information about the Administrators group. If you are installing on a Windows domain controller, your user ID must be a member of the Domain Admins group. ◆ Install and start Simple Network Management Protocol (SNMP) services and SNMP trap services.
The server	Make sure that the machine on which you are installing the server has a fixed address.
SNMPv3 Trap Support	<ul style="list-style-type: none"> ◆ Stop the OV Trap Service ◆ Stop and disable the Microsoft Trap Service

TABLE 3-2. Prerequisites for Installing NerveCenter on Windows (Continued)

If you are installing...	You must...
The OpenView Platform Adapter	<ul style="list-style-type: none"> ◆ Make sure the following services are started: SNMP EMANATE Adapter for NT and SNMP EMANATE Master Agent. ◆ Make sure that the SNMP Trap Service is not started. ◆ Install and start the HP trap service (ovtrapd). ◆ Have HP OpenView running on this machine. If HP OpenView is running on a UNIX system, you will need to install the OpenView Platform Adapter on that UNIX system.
The Universal Platform Adapter	<p data-bbox="586 604 1258 661">Have either IBM Tivoli Netcool/Omnibus (including the NerveCenter probe) or CA Unicenter TNG installed on this machine.</p> <hr/> <p data-bbox="605 696 1239 753">Note: You must get the NerveCenter probe, which is a IBM Tivoli product, from IBM Tivoli.</p>
A SQL Server NerveCenter database	<ul style="list-style-type: none"> ◆ Have an account with system administrator (sa) rights on SQL Server because only sa can create devices. ◆ Have SQL Server 6.x or 7.x installed and running.

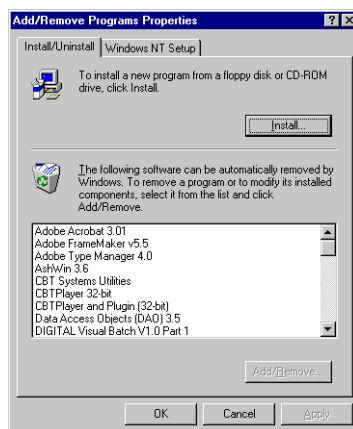
Starting the NerveCenter Setup Program

Use the Windows Add/Remove Programs applet to install or remove applications.

TO START THE NERVECENTER SETUP PROGRAM

1. Close all applications that are running.
2. In the Control Panel, select **Add/Remove Programs**.

The Add/Remove Programs Properties dialog box displays.



3. Select **Install**.

The Install Program dialog box is displayed.

4. Insert the NerveCenter CD-ROM and select **Next**.

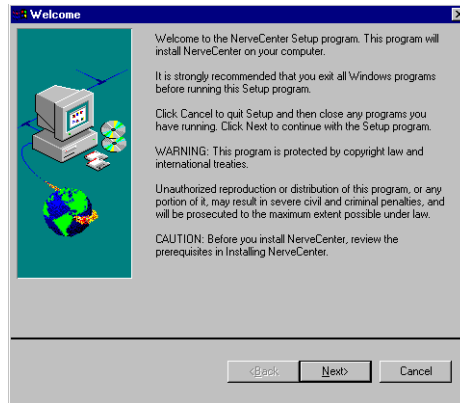
The NerveCenter Setup program should start automatically. If it does not, an error message tells you that Windows was unable to locate the installation program. If this occurs, select the **Browse** button to locate the setup.exe file.

5. Select **Finish** to start the installation.

Continue to the next section.

Starting the Installation

The Welcome dialog box provides some general information, including general suggestions for using Setup and copyright warnings.



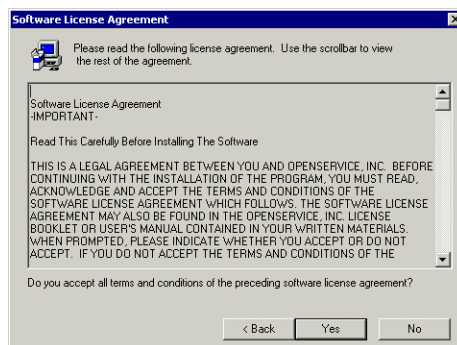
TO START THE INSTALLATION

- ◆ Select Next.

Continue to the next section.

Accepting the License Agreement

The Software License Agreement dialog box displays the software license agreement. You must accept the agreement to install the software.



TO ACCEPT THE LICENSE AGREEMENT

- ◆ Select **Yes**.

Continue to the next section.

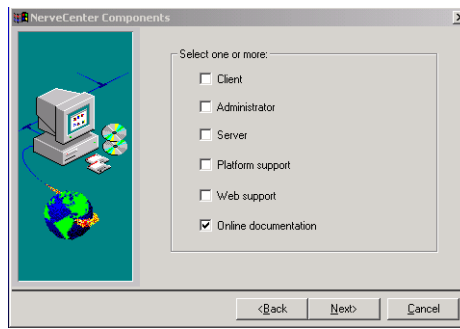
Selecting the Components to Install

The NerveCenter Components dialog box lets you select the NerveCenter components you want to install.



NOTE

You can install the client on any number of machines. However, your license key limits the number of clients that can connect to the server at any one time.



TO SELECT THE COMPONENTS

1. Select one or more of the following checkboxes:
 - ◆ **Client** - Lets you monitor your network or manage behavior models.
 - ◆ **Administrator** - Lets you configure the server and manage NerveCenter.
 - ◆ **Server** - Monitors managed nodes, performs actions associated with alarm transitions, and maintains NerveCenter objects.
 - ◆ **Platform support** - Integrates NerveCenter with your network management platform.
 - ◆ **Web support** - Lets you monitor your network from any machine that has a Web browser.

You do not need to have a Web server installed on this machine; however, if you don't, you will have to do some manual configuration after you finish installing NerveCenter. See [Where to Go from Here on page 42](#).

- ◆ **Online documentation** - Provides the complete NerveCenter library online.
2. Select **Next**.

Configuring the Platform Adapter

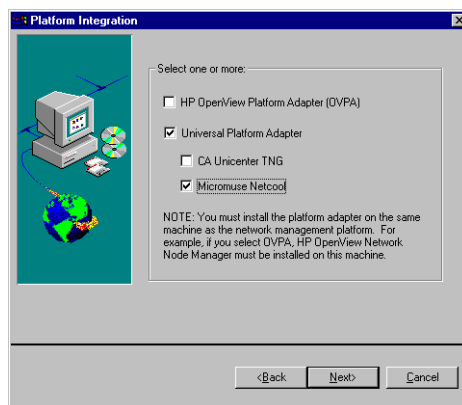
This dialog box is displayed only if you are installing network management platform integration for NerveCenter. If you are not installing network management platform integration, then skip to [Changing the Destination Directory or HP OpenView Path on page 34](#).

The Platform Integration dialog box lets you select which platforms to support.



NOTE

If you are installing platform support, the network management platforms must be installed on this machine.



TO CONFIGURE THE PLATFORM ADAPTER

1. Select one or both checkboxes for the platform adapter you want to install.
 - ♦ **HP OpenView Platform Adapter (OVPA)** - If you want to either get node information from or send messages to HP OpenView.



CAUTION

Do not select OVPA if you are installing the NerveCenter Server on the same machine as OpenView but you plan on using NerveCenter's Discovery behavior models instead of getting node information from OpenView.

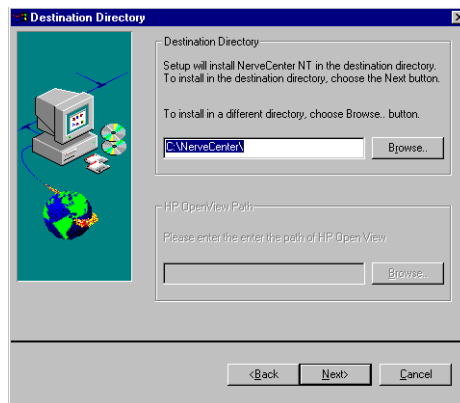
- ♦ **Universal Platform Adapter** - If you want to send messages to IBM Tivoli Netcool or CA Unicenter TNG.

2. If you selected Universal Platform Adapter, select the network management platform you want the universal platform adapter to support:
 - ◆ CA Unicenter TNG
 - ◆ IBM Tivoli Netcool
3. Select **Next**.

Continue to the next section.

Changing the Destination Directory or HP OpenView Path

The Destination Directory dialog box lets you change the NerveCenter installation directory. If you are installing OVPA, you can also confirm the HP OpenView path.



TO CHANGE THE DESTINATION DIRECTORY OR HP OPENVIEW PATH

1. To change the destination directory, select the **Browse** button and choose another directory.
2. To change the HP OpenView path, select the **Browse** button and choose the correct directory.
3. Select **Next**.

Continue to the next section.

Configuring the Service to Start Automatically

The Server Configuration dialog box is only displayed if you are installing a NerveCenter Server. If you are not installing a server, then skip to [Selecting the Program Folder on page 39](#).

The Server Configuration dialog box lets you specify whether the NerveCenter service starts automatically when the machine reboots. If you do not configure it to start automatically, you must start it yourself from the Start menu or the Services applet.



TO CONFIGURE THE SERVICE TO START AUTOMATICALLY

1. Select the **Configure service for automatic startup** checkbox.
2. Select **Next**.

Continue to the next section.

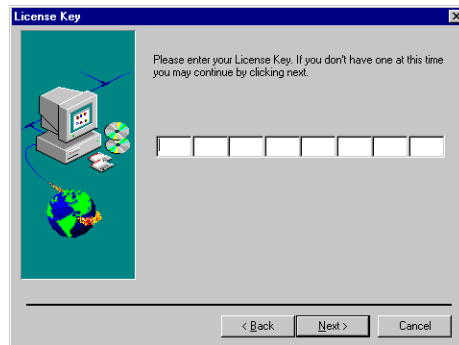
Entering a License Key

The License Key dialog box is only displayed if you are installing a NerveCenter Server. If you are not installing a server, then skip to [Selecting the Program Folder on page 39](#).

The License Key dialog box lets you enter your NerveCenter license key, which limits the number of clients that can connect to the server and the number of nodes that can be managed.

**NOTE**

You can install OpenService NerveCenter without providing a license key. You must then start the server, connect using the NerveCenter Administrator, and specify a license key.

**TO ENTER A LICENSE KEY**

1. Enter the license key you received with NerveCenter.

If you have more than one license key, enter the server license key here and additional keys later, using the NerveCenter Administrator, importutil, or SMS.

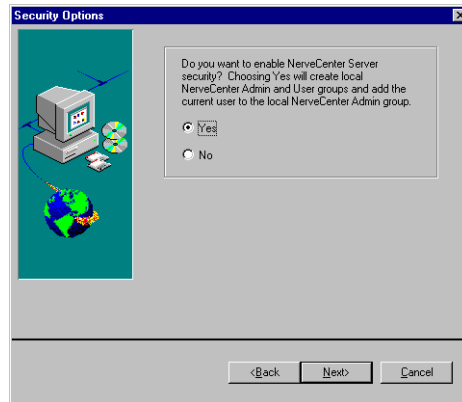
2. Select **Next**.

Continue to the next section.

Configuring Security

The Security Options dialog box is only displayed if you are installing the NerveCenter Server. If you are not installing a server, then skip to [Selecting the Program Folder on page 39](#).

The Security Options dialog box lets you decide whether to set up NerveCenter security. If you decide to use NerveCenter security, NerveCenter will validate users against membership in either the NerveCenter Admins or NerveCenter Users Windows user groups, which will be created by Setup.



TO CONFIGURE SECURITY

1. If you want to use NerveCenter security, select **Yes**.

**NOTE**

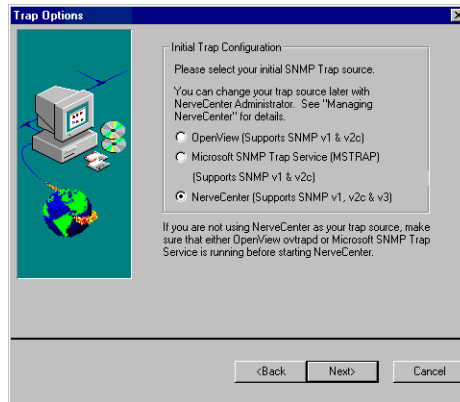
If you are upgrading your NerveCenter software and you select Yes, Setup will add your user ID to your existing local groups.

2. Select **Next**.
-

Continue to the next section.

Trap Options

The Trap Options dialog box lets you decide what your SNMP trap source will be. You can change the trap source later. See *Managing the NerveCenter Trap Source in Managing NerveCenter* for details.



TO SELECT THE SNMP TRAP SOURCE

1. Select one of the following SNMP trap sources:
 - ◆ OpenView - Supports SNMP v1 and v2c traps. OpenView must be co-resident with NerveCenter to support this option.
 - ◆ Microsoft SNMP Trap Service (MSTRAP) - Supports SNMP v1 and v2c traps. Disable the ovtrapd service before leaving the Trap Options dialog box if you select this option.
 - ◆ NerveCenter - Supports SNMP v1, v2c, and v3 traps. Disable the Microsoft Trap Service (SNMP Trap Service) and ovtrapd before leaving the Trap Options dialog box if you select this option.
2. Select **Next**.

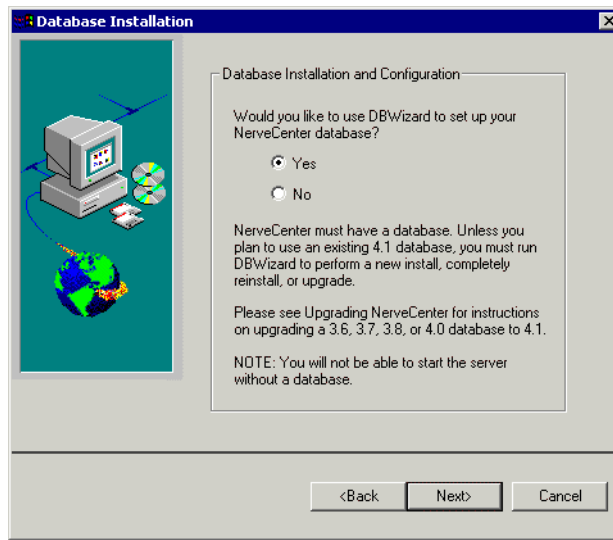
Continue to the next section.

Letting Setup Install and Configure the Database

The Database Installation dialog box is only displayed if you are installing the NerveCenter Server. If you are not installing a Server, then skip to [Selecting the Program Folder on page 39](#).

The Database Installation dialog box lets you specify whether you want Setup to automatically start DBWizard after the installation is complete so you can set up the NerveCenter database. If you

decide not to have Setup start DBWizard automatically, you can start it manually from the NerveCenter program group on the Start menu after the installation is complete.



TO USE THE WIZARD TO SET UP THE DATABASE

1. If you want DBWizard to set up the database, select **Yes**.



CAUTION

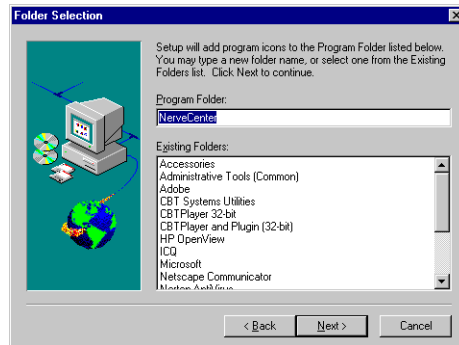
You must have a database before you can start the NerveCenter Server. If you are installing NerveCenter for the first time, if you uninstalled an existing version, or if you are installing NerveCenter in a new location, select **Yes**.

If you are upgrading from NerveCenter 3.8, your database, data source, and connection string already exist, so you can select **No**. See *Upgrading NerveCenter* for details.

2. Select **Next**.
-

Selecting the Program Folder

The Folder Selection dialog box lets you select a folder into which Setup adds program icons.



TO SELECT THE PROGRAM FOLDER

1. Select a folder from the **Existing Folders** listbox or type a name into the **Program Folder** field.
 2. Select **Next**.
-

Continue to the next section.

Completing the Installation

Setup displays status information as it installs the files.

After Setup has finished copying and installing the files, the Setup Complete dialog box is displayed.

TO COMPLETE THE INSTALLATION

- ◆ Select **Finish**.

If you installed platform integration for HP OpenView, a DOS window and the NNM Console Output Display window are displayed. The DOS window closes automatically after NerveCenter has been registered with HP OpenView.

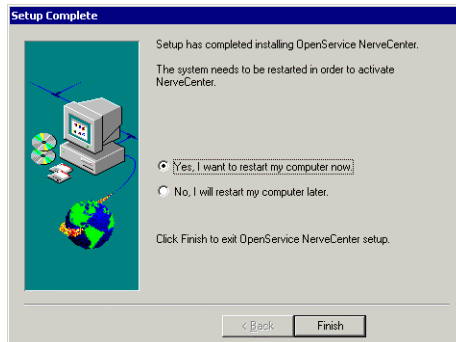


CAUTION

Do not close the DOS window. It will be closed when OVPA has been registered with OpenView. You can close the NNM Console Output Display window.

If you installed the NerveCenter Server and chose to set up your database now, DBWizard is displayed. For instructions on installing or upgrading a database, see [Chapter 4, Setting Up the Database on Windows](#).

Next, the setup complete dialog lets you restart the computer. You must restart the computer to have NerveCenter activate properly.



TO RESTART YOUR COMPUTER

1. Select the **Yes, I want to restart my computer now.** radio button.
 2. Select **Finish.**
-

Where to Go from Here

After you finish the installation, you must do the following before you use NerveCenter on Windows:

TABLE 3-3. Post-Installation Configuration Steps

If you...	You must...	For details, see...
Want to install NerveCenter on other machines by doing silent or remote installations	Edit a configuration script and run setup from the command line or use Microsoft System Management Server (SMS).	<i>Chapter 5, Doing Silent and Remote Installations on Windows</i>
Installed the server and chose not to set up the database during installation	Install a database now.	<i>Chapter 4, Setting Up the Database on Windows</i>
Left the License Key dialog box empty	Start the server, use the administrator to connect to the server, and enter a license key.	<i>Working with NerveCenter Serial Numbers in Managing NerveCenter</i>
Are ready to start and configure NerveCenter	Start the server, use the administrator to connect to the server, and configure your node source, inform hosts, email notification, and so on.	<i>Connecting to a NerveCenter Server in Managing NerveCenter</i>
Chose to install a platform adaptor to integrate NerveCenter with a network management platform	Configure NerveCenter and your network management platform to work together.	<i>Integrating NerveCenter with a Network Management Platform</i>
Chose to integrate NerveCenter with IBM Tivoli Netcool/Omnibus, but installed on a different machine than Netcool	Change the platform adapter's nhost setting to reflect the Netcool host machine.	<i>Integrating NerveCenter with Micromuse Netcool/OMNIBUS in Integrating NerveCenter with a Network Management Platform</i>

TABLE 3-3. Post-Installation Configuration Steps (Continued)

If you...	You must...	For details, see...
Chose NerveCenter security	Add users to the appropriate user groups: NerveCenter Admins and NerveCenter Users on Windows.	<i>Managing NerveCenter Security in Managing NerveCenter</i>
Installed Web support, but the Web server is on another machine	Set up the URL map manually.	<i>Managing NerveCenter Web Integration in Managing NerveCenter</i>
Installed Web support	Make sure that users have appropriate access to the server.	Your Web server documentation
Changed the default directory and you plan on using the IPSweep behavior model	Modify the IPSweep alarm to use the new path.	<i>Using NerveCenter's IPSweep Behavior Model in Designing and Managing Behavior Models</i>

3

Running Setup on Windows

Setting Up the Database on Windows

4

When you install NerveCenter for the first time or move the NerveCenter database to a new location, you must either set up a new NerveCenter database or reconnect to an existing NerveCenter version 4.1.03 database. (If you are upgrading, refer to *Upgrading NerveCenter*.)



NOTE

You cannot connect to a NerveCenter 4.0 database without first upgrading it to version 4.1.03. If you are upgrading from NerveCenter 4.0, you must upgrade your NerveCenter database to version 4.1.03. Refer to *Upgrading NerveCenter* for more information.

If you instructed NerveCenter Setup to set up your NerveCenter database, then DBWizard is automatically launched for you after NerveCenter Setup is done.



CAUTION

You must be logged in as an administrator to set up the database.

If you create a new database, you can use either a Microsoft Access database or a Microsoft SQL Server database. As part of the creation process, a serialized database file is imported into the database. The serialized file contains the base set of NerveCenter objects, including polls, masks, alarms, and so on.



NOTE

You do not need to have Access installed on the machine to create an Access database.

This chapter includes the following sections:

Section	Description
<i>Creating and Installing a New Database on page 46</i>	Describes how to create a new SQL Server database or an Access database.
<i>Connecting to an Existing Database on page 57</i>	Describes how to connect to an existing 4.1.03 database.

To install a database using the command line, see *Creating your Database from the Command Line on page 77*.

Creating and Installing a New Database

OpenService NerveCenter supplies a wizard called DBWizard and a command-line version of the wizard. You can use either one to set up your database. If you are installing NerveCenter on many computers, you may want to use the wizard to set up the first database, then save your configuration settings and use them with the command-line version of DBWizard to save time on subsequent setup routines.



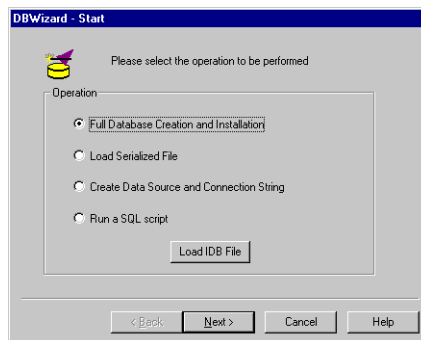
NOTE

If you are creating a SQL database, you must be logged into the same domain that SQL Server is running on and you must have SQL administrator (sa) rights, including the right to create database devices.

TO SET UP A NEW DATABASE FOR NERVECENTER

1. If DBWizard was not launched automatically by Setup, select **DBWizard** from the NerveCenter program group on the **Start** menu.

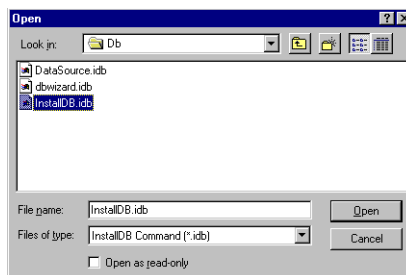
The Start dialog box displays.



2. Select the **Full Database Creation and Installation** radio button.
3. To load predefined or default values, select the **Load IDB File** button.

An IDB file contains settings used during this install. If you are re-running DBWizard, you can load an existing IDB file to save time.

The Open dialog box displays.

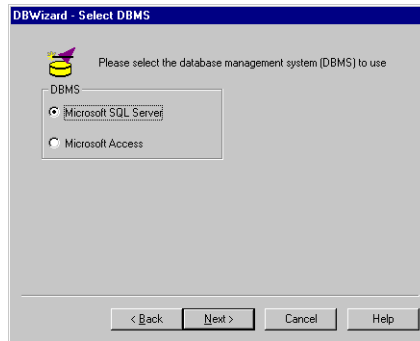


- a. Select an IDB file from the NerveCenter Db folder. (If you haven't created one before, select **InstallDB.idb**. This file contains default settings.)
- b. Select **Open** to load the file.

This returns you to the Start dialog box.

4. Select the **Next** button.

The Select DBMS dialog box displays.



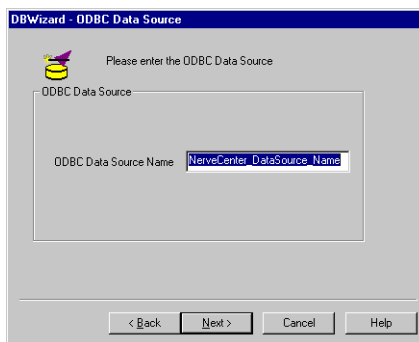
5. Select either **Microsoft SQL Server** or **Microsoft Access** to select the type of database that you want to install.
6. Select the **Next** button.

If you selected SQL Server, see [Creating a SQL Server Database on page 49](#). If you selected Access, see [Creating an Access Database on page 54](#).

Creating a SQL Server Database

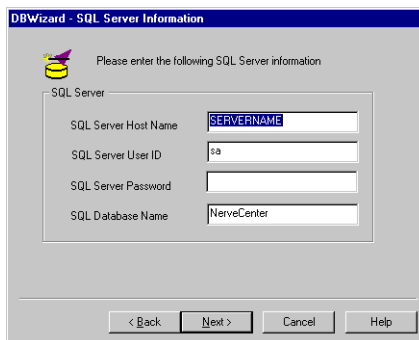
TO CREATE AN SQL SERVER DATABASE

If you selected SQL Server, the ODBC Data Source dialog box displays.



1. Specify a name for the new ODBC data source or leave the default name.
2. Select the **Next** button.

The SQL Server Information dialog box displays.



3. Supply the appropriate host name, user ID, and password. The default database name is NerveCenter. You can change it if you would like to use a different name for the database.



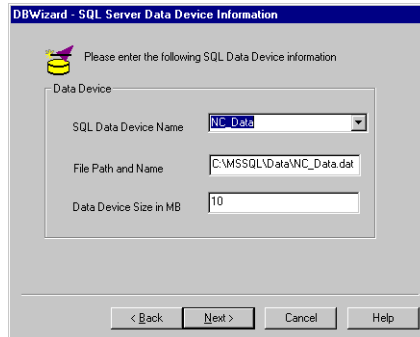
NOTE

Each NerveCenter Server must have its own database. NerveCenter Servers cannot share a database.

You must supply a user ID and password for the SQL Server that has database administrator rights, including the right to create devices.

4. Select the **Next** button.

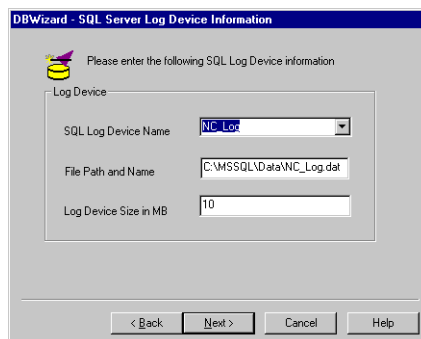
The SQL Server Data Device Information dialog box displays.



DBWizard supplies default values for each field. If you need to change these values (for example, because your naming conventions are different), you can do so.

- ◆ **SQL Data Device Name** - The name of the SQL data device to be used by the database. If the database already exists, the existing device name is used. If it does not exist, the database is created when you specify the data device name. Supply a name or select a device from the drop-down list.
 - ◆ **File Path and Name** - Full path and name for the SQL data device file. (If the file is on another machine, use the UNC file name: `\\machine\path`.) The default path provided is the same path used by the SQL master device. You can choose a different one, but the directory you specify must exist. If the file already exists, the operation fails. If the file exists but is not used by a specified device, it is deleted and re-created.
 - ◆ **Data Device Size in MB** - Size of the data device in megabytes. The suggested size is at least 10 megabytes. NerveCenter checks to make sure that the device selected has enough space. This field is required only if you specified the data device name.
5. Select the **Next** button.

The SQL Server Log Device Information dialog box displays.

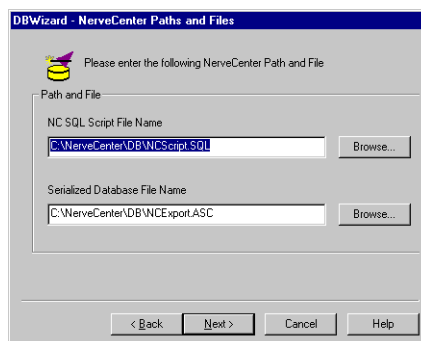


DBWizard supplies default values for each field. If you need to change these values (for example, because your naming conventions are different), you can do so.

- ♦ **SQL Log Device Name** - Name of the SQL log device to be used by the database. This data is only required if you specified the log device name. The directory must exist. If the file specified already exists, the operation fails. If the database already exists, you do not need to specify the log device. If the device already exists, it is used.
- ♦ **File Path and Name** - Full path and name of the file to use for the SQL log device. (If the file is on another machine, use the UNC file name: \\machine\path.) This is required only if you specified the log device name. The directory must exist. If the file already exists and is used by another device, the operation fails.
- ♦ **Log Device Size in MB** - The size of the log device in megabytes. The suggested minimum is 10 megabytes. This number is required only if you specified the log device name.

6. Select the **Next** button.

The NerveCenter Paths and Files dialog box displays.

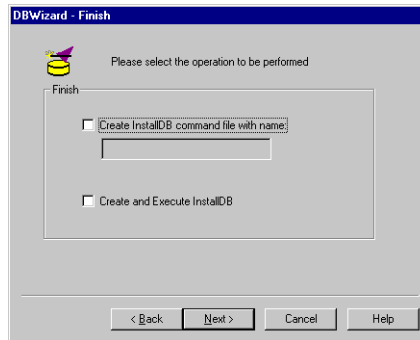


The default script, NCScript.sql, creates the SQL database that NerveCenter will use. Only use this script when creating a new database.

The default serialized database file, NCEExport.asc, provides default values for your new database. Only use this serialized file when creating a new database.

7. Select the **Next** button.

The Finish dialog box displays.



8. To create a SQL database for NerveCenter with the settings that you just specified, check the **Create and Execute InstallDB** checkbox.
9. If you need to create multiple SQL databases on different machines, check **Create InstallDB command file with name** checkbox and provide a file name in the text box. InstallDB will create another IDB file that saves the settings that you used in this install. You can then load this new IDB file into DBWizard when you run it on the other machines.

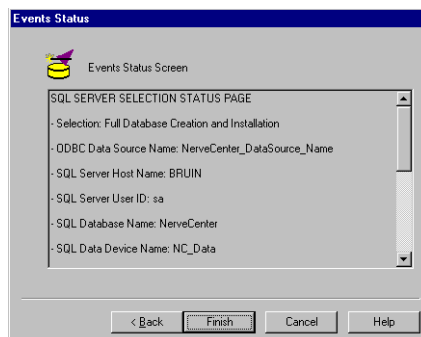


NOTE

If you do not check the Create InstallDB command file checkbox, the settings you just specified are saved in the dbwizard.idb command file.

10. Select the **Next** button.

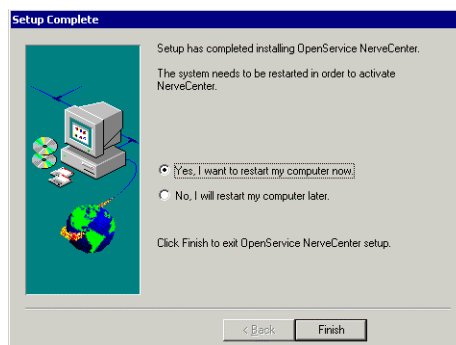
The Events Status dialog box displays. It lists the settings that you have specified for your SQL Server database.



11. Verify that all the settings are correct. If necessary, you can use the **Back** button to return to previous dialog boxes and make corrections.
12. When everything is correct, select the **Finish** button.

The Status Screen dialog box displays with status information.

When the installation is complete, select the **OK** button to exit DBWizard. This returns you to the NerveCenter Setup program to restart your computer. The setup complete dialog lets you restart the computer. You must restart the computer to have NerveCenter activate properly.



TO RESTART YOUR COMPUTER:

1. Select the **Yes, I want to restart my computer now.** radio button.
2. Select **Finish**.

Creating an Access Database

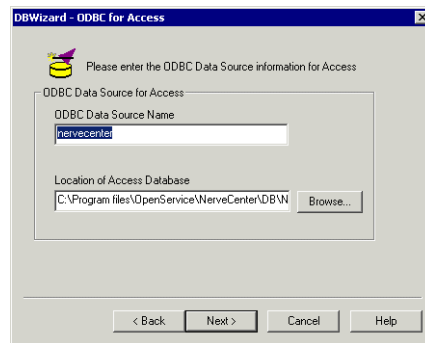
TO CREATE AN ACCESS DATABASE

If you selected Access, the ODBC for Access dialog box displays. The wizard creates the data source for the database with the name you specify.



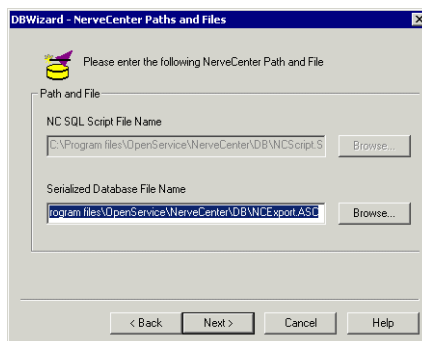
NOTE

Access does not have to be installed on the machine for you to create an Access database.



1. Supply a name for the Access ODBC data source.
2. OpenService NerveCenter ships with a default Access database, called NCAccess.mdb. It is located in the NerveCenter Db folder. Specify this default Access database in the **Location of Access Database** field.
3. Select the **Next** button.

The NerveCenter Paths and Files dialog box displays.



Because you are setting up an Access database, the tables are created for you. The NC SQL Script File Name field is grayed out.

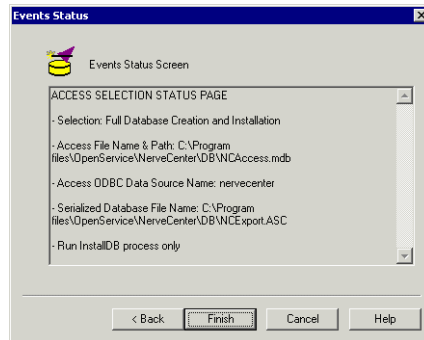
4. In the **Serialized Database File Name** field, you must specify the default serialized database file, **NCEExport.asc**. This will set up default values in your new database.
5. Select the **Next** button.
6. To create an Access database for NerveCenter with the settings that you just specified, check the **Create and Execute InstallDB** checkbox.
7. If you need to create multiple Access databases on different machines, check **Create InstallDB command file with name** checkbox and provide a file name in the text box. InstallDB will create another IDB file that saves the settings that you used in this install. You can then load this new IDB file into the InstallDB wizard when you run it on the other machines.

**NOTE**

If you do not check the Create InstallDB command file checkbox, the settings you just specified are saved in the dbwizard.idb command file.

8. Select the **Next** button.

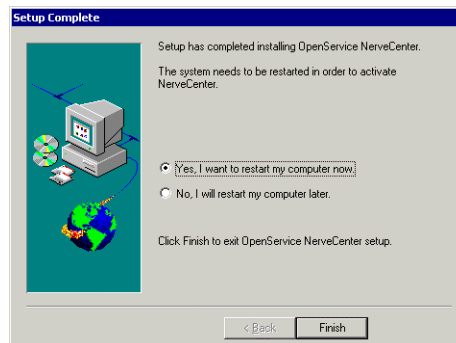
The Events Status dialog box displays. It lists the settings that you have specified for your Access database.



9. Verify that all the settings are correct. If necessary, you can use the **Back** button to return to previous dialog boxes and make corrections.
10. When everything is correct, select the **Finish** button.

When the installation is complete, select the **OK** button to exit DBWizard. This returns you to the NerveCenter Setup program to restart your computer.

The setup complete dialog lets you restart the computer. You must restart the computer to have NerveCenter activate properly.



TO RESTART YOUR COMPUTER

1. Select the **Yes, I want to restart my computer now.** radio button.
2. Select **Finish**.

Connecting to an Existing Database

If you already have a version 4.1.03 NerveCenter database, or if you installed NerveCenter 4.1.03 in a new location, you can configure the ODBC data source and connection string to point to this database.



NOTE

You cannot connect to a previous NerveCenter database without first upgrading the database to version 4.1.03. For more information, refer to *Upgrading NerveCenter*.

The steps for a SQL database and an Access database are slightly different.

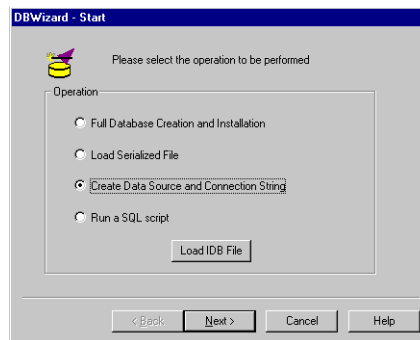
- ◆ For a SQL database, see *Connecting to a SQL Database on page 57*.
- ◆ For an Access database, see *Connecting to an Access Database on page 61*.

Connecting to a SQL Database

TO POINT TO A SQL DATABASE

1. From the **Start** menu, select DBWizard.

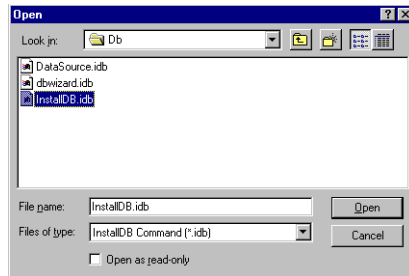
The Start dialog box displays.



2. Select **Create Data Source and Connection String**.
3. To load predefined or default values, select the **Load IDB File** button.

An IDB file contains settings used during this install. If you are re-running DBWizard, you can load an existing IDB file to save time.

The Open dialog box displays.

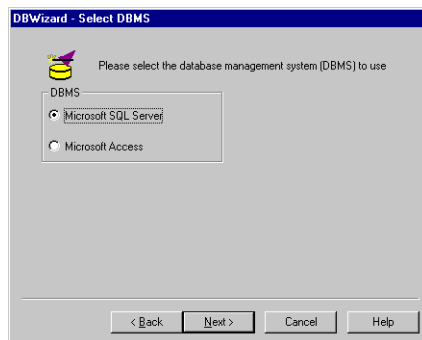


- a. Select an IDB file from the NerveCenter Db folder. (If you haven't created one before, select **InstallDB.idb**. This file contains default settings.)
- b. Select **Open** to load the file.

This returns you to the Start dialog box.

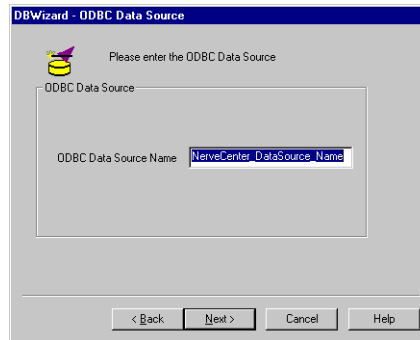
4. Select the **Next** button.

The Select Database dialog box displays.

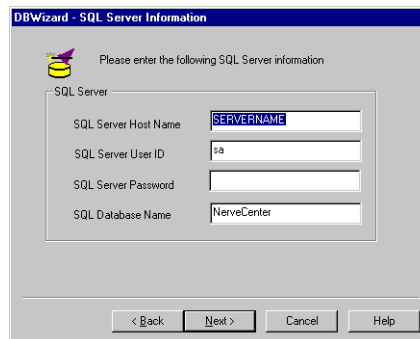


5. Select **Microsoft SQL Server** as the database type.
6. Select the **Next** button.

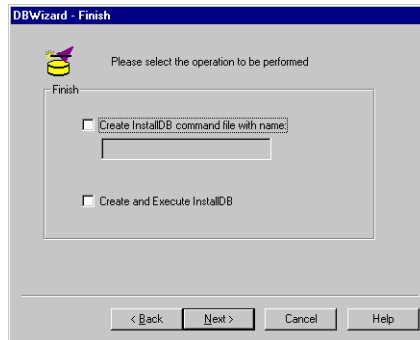
The ODBC Data Source dialog box displays.



7. Type in an ODBC data source name.
8. Select the **Next** button.
9. The SQL Server Information dialog box displays. Provide the host name, user ID, password, and database name for the SQL database.



10. Select the **Next** button.
The Finish dialog box displays.



11. To create the ODBC data source and connection string for the database you just specified, check the **Create and Execute InstallDB** checkbox.

If you need to repeat this process on different machines, check the **Create InstallDB** command file with name checkbox and provide a file name in the text box. InstallDB will create another IDB file that saves the settings that you used in this install. You can then load this new IDB file into the InstallDB wizard when you run it on the other machines.

**NOTE**

If you do not check the **Create InstallDB** command file checkbox, the settings you just specified are saved in the `dbwizard.idb` command file.

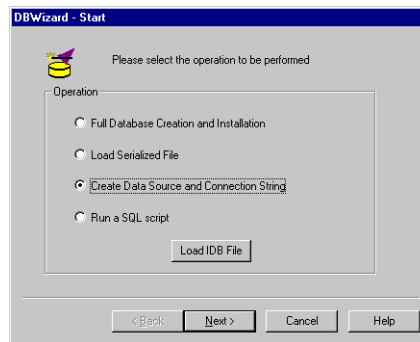
12. Select the **Next** button.
The Events Status dialog box displays. It lists the settings that you have specified.
 13. Verify that all the settings are correct. If necessary, you can use the **Back** button to return to previous dialog boxes and make corrections.
 14. When everything is correct, select the **Finish** button.
The Status Screen dialog box displays with status information.
 15. When the installation is complete, select the **OK** button to exit DBWizard.
-

Connecting to an Access Database

FOLLOW THESE INSTRUCTIONS TO POINT TO AN ACCESS DATABASE

1. From the **Start** menu, select DBWizard.

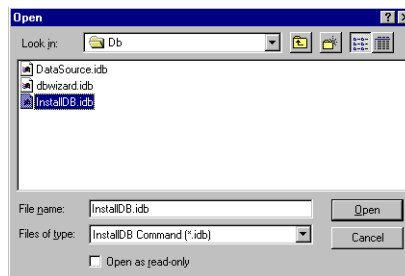
The Start dialog box displays.



2. Select **Create Data Source and Connection String**.
3. To load predefined or default values, select the **Load IDB File** button.

An IDB file contains settings used during this install. If you are re-running DBWizard, you can load an existing IDB file to save time.

The Open dialog box displays.

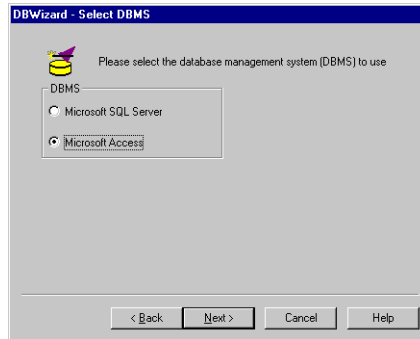


- a. Select an IDB file from the NerveCenter Db folder. (If you haven't created one before, select **InstallIDB.idb**. This file contains default settings.)
- b. Select **Open** to load the file.

This returns you to the Start dialog box.

4. Select the **Next** button.

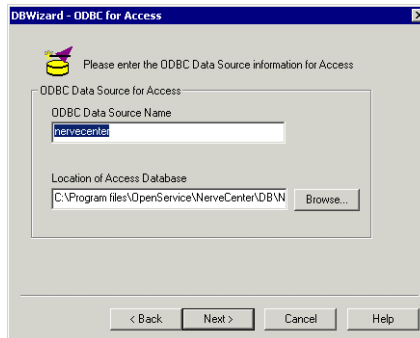
The Select Database dialog box displays.



5. Select **Access** as the database type.

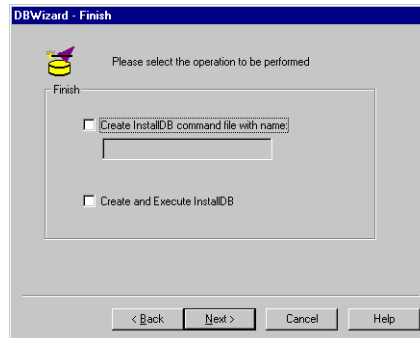
6. Select the **Next** button.

The ODBC Data Source dialog box displays.



7. Type in an ODBC data source name.
8. Type in the location of the Access database.
9. Select the **Next** button.

The Finish dialog box displays.



10. To create the ODBC data source and connection string for the database you just specified, check the **Create and Execute InstallDB** checkbox.

If you need to repeat this process on different machines, check the **Create InstallDB command file with name** checkbox and provide a file name in the text box. InstallDB will create another IDB file that saves the settings that you used in this install. You can then load this new IDB file into the InstallDB wizard when you run it on the other machines.

**NOTE**

If you do not check the Create InstallDB command file checkbox, the settings you just specified are saved in the dbwizard.idb command file.

11. Select the **Next** button.
The Events Status dialog box displays. It lists the settings that you have specified.
12. Verify that all the settings are correct. If necessary, you can use the **Back** button to return to previous dialog boxes and make corrections.
13. When everything is correct, select the **Finish** button.
The Status Screen dialog box displays with status information.
14. When the installation is complete, select the **OK** button to exit DBWizard.

4

Setting Up the Database on Windows

Doing Silent and Remote Installations on Windows

A *silent installation* is an installation done from the command line. In a text file, you provide all the configuration values that you would normally enter in the Setup GUI. A *remote installation* is done using Microsoft Systems Management Server (SMS) tools.



NOTE

Remote installations can only be performed on a Windows Server. Windows Workstation is not supported by SMS 1.x for this type of installation.

The procedures for both are very similar—remote installations using SMS include one additional step. The following steps describe the procedure:

1. Create a source directory from which to install.
2. Edit the installation configuration file.
3. Run Setup from the command line.
4. If you are doing remote installations using SMS, use the SMS Administrator to create a package and install NerveCenter on remote machines.

Follow the instructions in this chapter to do a silent or remote installation of the following NerveCenter components:

TABLE 5-1. NerveCenter Components

Component	Description
NerveCenter Client	Lets you monitor your network, as well as design and manage behavior models.
NerveCenter Administrator	Lets you configure NerveCenter.
NerveCenter Server	Carries out all major tasks, including polling SNMP agents, triggering alarms, and making sure that alarm transitions occur.
Platform Adapters	Integrate NerveCenter with supported network management platforms. (See <i>Network Management Platforms in NerveCenter 4.1.03 Release Notes</i> for a complete list.)

TABLE 5-1. NerveCenter Components

Component	Description
NerveCenter Web support	Integrates NerveCenter with supported Web servers. (See <i>Web Servers in NerveCenter 4.1.03 Release Notes</i> for a complete list.)
Online documentation	Provides the NerveCenter library in HTML with a full-text search engine. (PDF versions are also installed for printing.)

You can install the components on any machine that meets the configuration requirements. (See *Requirements in NerveCenter 4.1.03 Release Notes*.) If you integrate NerveCenter with a network management platform, the platform adapter must be installed on the machine that is running the network management platform.

**CAUTION**

Before you install NerveCenter, make sure you meet the prerequisites. See *Preparing to Install NerveCenter on Windows on page 27*.

This chapter includes the following sections:

Section	Description
<i>Creating a Source Directory on page 67</i>	Provides instructions on creating the source directory, from which you will install NerveCenter or create SMS packages.
<i>Editing the Installation Configuration File on page 68</i>	Describes how to edit the configuration file so NerveCenter is installed with the options you specify.
<i>Running Setup from the Command Line on page 75</i>	Describes how to install NerveCenter on a single machine from the command line.
<i>Installing NerveCenter Remotely on page 75</i>	Describes how to create an SMS package and install NerveCenter on one or more machines.
<i>Creating your Database from the Command Line on page 77</i>	Describes how to create an SQL Server or Access database from the command line.
<i>Configuring the Database Remotely on page 81</i>	Describes how to create and install the database remotely.
<i>Configuring NerveCenter Remotely on page 82</i>	Describes how to change the NerveCenter configuration on one or more machines.

Creating a Source Directory

Whether you are doing a single silent installation or subsequent remote installations, you must set up a source directory from which you will install NerveCenter.

TO CREATE A SOURCE DIRECTORY

1. Create a directory to use as the source directory.

Create the directory either on the host machine on which you are installing or on a system that is accessible to and shareable with that host. For example, create a directory called D:\ncsetup and share it as ncsetup.



CAUTION

If you are going to use SMS to do a remote installation, this directory must either be on the SMS host machine or on a system that is accessible to and shareable with the SMS host.

2. Copy all the files and directories from the NerveCenter CD-ROM NT directory to the directory you just created.
-

After you have copied the installation files to the source directory, you can edit the installation configuration file.

Editing the Installation Configuration File

Whether you are doing a silent or remote installation, you must edit the installation configuration file, `setup.iss`. This file lets you specify any configurable NerveCenter option.



NOTE

If you are enabling SNMP v3 traps, check the Services applet in the Windows Control panel to make sure that the MS Trap Service or the OV Trap Service is stopped and disabled.

TO EDIT THE INSTALLATION CONFIGURATION FILE

1. From the source directory, open **setup.iss** in a text editor.
2. Edit the file, specifying your configuration options.



NOTE

If you plan to use SMS to install NerveCenter onto more than one system, make sure that the settings in the `setup.iss` file are valid for all those installations. You may need to create separate install packages for variations of the installation procedure, such as the NerveCenter Client only on a system.

The configuration options are similar to the options you specify in the Setup GUI. See [Running Setup on Windows on page 25](#) for more details.



NOTE

0 is equivalent to False, 1 is equivalent to True.

[Table 5-2](#) lists the sections in the file that you can and cannot edit.

TABLE 5-2. Sections in the Installation Configuration File

Description	Section
Do not change this section.	[InstallShield Silent] Version=v3.00.000 File=Response File

TABLE 5-2. Sections in the Installation Configuration File (Continued)

Description	Section
Do not change this section.	[Application] Name=OpenService NerveCenter Version=4.10.000 Company=OpenServiceService
Do not change this section.	[DlgOrder] Dlg0=Welcome-0 Count=5 Dlg1=AskDestPath-0 Dlg2=SelectFolder-0 Dlg3=SdAskOptions-0 Dlg4=SdFinish-0
By default, security is not configured. To configure security, comment out this section and uncomment the next section.	;To say no to both security options [SdAskOptions-0] Component-type=string Component-count=0 Result=1
By default, security is not configured. To configure security, comment out the previous section and uncomment this section. Do not change the names of the groups.	;To say yes to both security options ;[SdAskOptions-0] ;Component-type=string ;Component-count=2 ;Component-0=NerveCenter Admins ;Component-1=NerveCenter Users
Do not change this section.	[Welcome-0] Result=1
To install NerveCenter in another directory, or to specify a different HP OpenView directory, edit this section.	[AskDestPath-0] szTargetPath=c:\Program files\OpenService\NerveCenter\ szOVPAPath=c:\OpenView\ Result=1

TABLE 5-2. Sections in the Installation Configuration File (Continued)

Description	Section
Type your license key here. If you have more than one license key, separate them with semicolons (;).	[License-0] LicenseKey=
Select the components you want to install.	[AppSelection-0] bInstallServer=1 bInstallClient=1 bInstallAdmin=1 bInstallPlatformIntegration=0 bInstallWebServerIntegration=1 bInstallOnlineBooks=0
Do not change this section.	[ForceShutdown-0] bForceShutdown=1
Edit this section to change platform adapter configuration options.	[PlatformIntegration-0] bOVPA=1 bPAServer=1 bUnicenterSupport=1 bNetcoolSupport=1 bPAServerAsService=1 bPAServerAutoStart=1
Edit this section to change web server configuration options.	szWebServer=IIS; Possible values (case sensitive): {IIS, PWS, NETSCAPE} bRunAsService=1 bAutoStartService=1 bRestartWebServer=1 bForceInstall=1 szWebCollectorIP=* nWebCollectorPort=32550

TABLE 5-2. Sections in the Installation Configuration File (Continued)

Description	Section
<p>Edit this section to change server configuration options.</p> <p>You can edit these options later with NerveCenter Administrator</p>	<pre>[ServerConfiguration-0] MibName=NerveCtr.mib bAutoStartService=1 nServerConnectionPort=32504 nSNMPRetries=3 nSNMPRetryInterval=10 nDefaultSNMPPort=161 bEnableDiscovery=0 Result=1 nTrapperConnPort=32506 nCLIConnPort=32507 nInformPort=32505 nDBRetryInterval=2 ; in minutes nAlarmHistoryDepth=20 bNCNoSecurity=FALSE bProcessUnknownTraps=True bApplyAllMasksForEachTrap=True bEnableSocketLogging=No</pre>
<p>Edit this section to change log management options.</p>	<pre>[ServerLogConfiguration-0] nMaximumLogEntryAge=120 nMaximumLogFileSize=1024 nMaximumNumberOfRecords=1800 nLogDeletionPercentage=30 nMaxQueueDepth=10000</pre>

TABLE 5-2. Sections in the Installation Configuration File (Continued)

Description	Section
Edit this section to configure mail and pager actions.	[ActionsConfiguration-0]
You can edit these options later with NerveCenter Administrator	;Sample Format ;ExchangeProfile=userjoe ;ExchangePassword=passwdjoe ;SMTPHost=smtphost ;PauseString=9, ExchangeProfile= ExchangePassword= SMTPHost= TouchPulse=Touch PagerNumber= PauseString= Result=1

TABLE 5-2. Sections in the Installation Configuration File (Continued)

Description	Section
<p>Edit this section if a network management platform is going to provide node information.</p> <p>You can edit these options later with NerveCenter Administrator</p>	<pre>[NodeSourceConfiguration-0] ;Sample Formats: ;Host=sunny ;nHostPort=6024 ;WantedCapabilities=capability1,capability2,capability3 ;SystemObjectIds=OID1,OID2,OID3 ;OpcHostName=norm ;OpcHostPort=6028 Host= nHostPort= Method=Manual WantedCapabilities= SystemObjectIds= OpcHostName= OpcHostPort= Result=1 AckInforms=1</pre>
<p>Edit this section to create IP filters that limit the nodes NerveCenter can detect and to enable Discovery.</p> <p>You can edit these options later with NerveCenter Administrator</p>	<pre>[IPConfiguration-0] ;Sample Format ;SubnetMaskEx=Subnet1,Mask1:Subnet2,Mask2,Exclu2 ; Choices below are none, all, filter ;IPDiscoverNodes=none ; Choices are 1 for True, 0 for False ;EnableDiscovery= SubnetMaskEx= IPDiscoverNodes=filter EnableDiscovery=1</pre>

TABLE 5-2. Sections in the Installation Configuration File (Continued)

Description	Section
<p>Edit this section to configure Inform hosts.</p> <p>You can edit these options later with NerveCenter Administrator</p>	<pre>[NodeNotification-0] ;Sample Format ;NodeNotify1=host1 port1 EVENT_AND_SYMBOL minseverity1 prop1 ;NodeNotify2=host2 port2 EVENT minseverity2 prop2 ;ex: NodeNotify1=sunny 6024 EVENT_AND_SYMBOL 0 NodeNotify1= Result=1</pre>
<p>Edit this section to change NerveCenter's program group.</p>	<pre>[SelectFolder-0] szResultFolder=NerveCenter Result=1</pre>
<p>Do not change this section.</p>	<pre>[SdStartCopy-0] Result=1</pre>
<p>Do not change this section.</p>	<pre>[SdFinish-0] bOpt1=0 bOpt2=0 Result=1</pre>
<p>Edit this section if you are installing if you do not want MSTRap as your trap service, that is, if you are installing OVPA or enabling SNMPv3 traps.</p> <p>Note: If you enable SNMP v3 traps, you must disable MS Trap service (bMSTRap=0).</p>	<pre>[TrapService-0] bMSTRap=1</pre>
<p>Edit this section to enable NerveCenter to receive SNMP v3 traps.</p>	<pre>[TrapConfig-0] bNCV3Traps=0</pre>
<p>3. Save and close the file.</p>	

After you finish editing the file, you can run Setup.

Running Setup from the Command Line

You can run Setup from the command line, using the values in the configuration file you edited.

TO RUN SETUP FROM THE COMMAND LINE

1. If NerveCenter is already installed on this machine, stop all NerveCenter and Wind/U processes. See *Upgrading NerveCenter*.
2. If NerveCenter is already installed on this machine, back up any files that you have customized for your business or your environment. See *Upgrading NerveCenter*.
3. From a DOS prompt, navigate to the installation source directory you created.
4. Type the following command; then press Enter.

```
setup -s
```

In the Task Manager, you can tell the installation is complete when the `_INSO432._MP` process stops running. View messages generated during the installation in the `ncsetup.log` file in the newly-installed NerveCenter directory.

After you run setup from the command line, you still need to set up the NerveCenter database. For more information, see *Chapter 4, Setting Up the Database on Windows*.

After you set up the database, you must restart your computer for NerveCenter to activate properly.

Installing NerveCenter Remotely

After you have create the source installation directory and edited the configuration file, you can create an SMS package and install that package on other machines remotely.




NOTE

The following procedures give the NerveCenter-specific information for using SMS with NerveCenter. You must already be familiar with SMS. Microsoft provides complete SMS documentation; see the Microsoft Systems Management Server documentation for details.

TO INSTALL NERVECENTER REMOTELY

1. Create a new SMS package for NerveCenter by doing the following:
 - a. From the SMS Administrator toolbar, select the **Open Window: Packages** button.
The Packages window appears.
 - b. Select the **New** button to display the Packages Properties dialog box.
 - c. Select **Import** to display the File Browser dialog box.
 - d. Navigate to your package source directory and select **NCSetup.pdf**, then select **OK**.
 - e. In the Package Properties dialog box, select **Workstations** to display the Setup Packages for Workstations dialog box.
 - f. In the **Source Directory** box, specify the server and sharename of the package source directory, and select **Close**.
 - g. Select **OK** again when prompted for confirmation.
The new package is displayed in the Packages window.
 2. Using the SMS Administrator, create a Run Command On Workstation task to install NerveCenter on a specified drive on specified SMS computers by doing the following:
 - a. From the SMS Administrator toolbar, select the **Open Window: Jobs** button.
The Job window appears.
 - b. Select the **New** button to display the Job Properties dialog box.
 - c. Select **Details** to display the Job Details dialog box.
 - d. In the **Job Target** area, specify the SMS computer (in the Machine Path field) or machine group (in the Machine Group field) on which NerveCenter should be installed.

 **NOTE**
The destination machine must be part of the SMS database.
 - e. Make sure the **Run Workstation Command** box is checked, and select the **Install NerveCenter** command.
-

When you close the Job Properties dialog box, the task is set to run. When the task completes, the specified NerveCenter components will be installed on the specified drive and directory on all target computers.

Creating your Database from the Command Line

Instead of using the wizard, you can create or modify your database from the command line.

**NOTE**

You cannot connect to a NerveCenter 3.6 or 3.7 database without first upgrading the database to version 3.8. For more information, refer to *Upgrading NerveCenter*.

Whether you are doing a silent or remote creation of your database, you must edit the database configuration file, InstallDB.idb. This file lets you specify the information necessary for creating a database.

TO EDIT INSTALLDB.IDB FOR AN SQL SERVER DATABASE

You need to provide all required information about the destination server and your options to InstallDB.

Revise the contents of InstallDB.idb, located in the *installation/DB* directory, as follows, substituting the names for your server, user ID, database, and so on. For a review of the options, see [Creating a SQL Server Database on page 49](#).

```
SQL Server Name:          ServerName
SQL User Id:              sa
SQL Password:
Database Name:           NerveCenterDB
Data Device Name:        NC_Data
Data Device File Name:   C:\SQL\Data\NC_Data.dat
Data Device Size in MB:  10
Log Device Name:         NC_Log
Log Device File Name:    C:\SQL\Data\NC_Log.dat
Log Device Size in MB:   10
Data Source Name:        NerveCenter_DataSource_Name
```

**NOTE**

The data source can't already exist. You must choose a new name.

```
Path to SQL Files:       Path
```

**NOTE**

Path to the new directory you created.

```
SQL Script File Name:    NCScript.sql
Database File Name:      NCExport.asc
```

**NOTE**

The default database creation file or your exported database file.

TO EDIT INSTALLDB.IDB FOR AN ACCESS DATABASE

Revise the contents of InstallDB.idb, located in the *installation*\DB directory, as follows:

Delete all the lines in the InstallDB.idb file and replace with the following three lines:

```
Access File Name:           Path\NCAccess.mdb
```

**NOTE**

OpenService NerveCenter ships with a default Access database, called NCAccess.mdb. It is located in the NerveCenter Db folder.

```
Data Source Name:           ODBC_data_source  
Database File Name:         Path\NCEExport.ASC
```

**NOTE**

You must specify the default serialized database file, NCEExport.asc. This will set up default values in your new database.

Once you edit the InstallDB.idb file, you can run InstallDB.

 TO CREATE YOUR DATABASE FROM THE COMMAND LINE

1. From a DOS prompt, navigate to the *installation*\NerveCenter\bin directory.
2. Type the **InstallDB** command with the appropriate parameters, then press Enter.

The syntax is:

```
InstallDB -F IDBfile -O {f|l|c|r} -D {s|a} [-M {v|s}] [-H]
```

Parameter	Description
-F <i>IDBfile</i>	The path and file name for the IDB file. This parameter is required.
-O {f l c r}	Specifies the operation code. The choices are: <ul style="list-style-type: none"> ◆ f - Full database creation and installation ◆ l - Load serialized file ◆ c - Create data source and connection string ◆ r - Run SQL script This parameter is required.
-D {s a}	Specifies the database type. The choices are: <ul style="list-style-type: none"> ◆ s - SQL ◆ a - Access This parameter is required. <p>Note: The SQL script can only run against a SQL database, not an Access database. If the operation parameter is r (run SQL script), then you must specify s (SQL) as the database type.</p>
[-M {v s}]	Specifies the mode of operation: v is verbose, and s is silent. This parameter is optional; if nothing is specified, it defaults to s (silent).
[-H]	Displays usage help in a dialog box. (You can also enter simply installdb .)

For example:

```
InstallDB -F c:\temp\InstallDB.idb -M v -O f -D s
```

Configuring the Database Remotely

You can use SMS with a configuration file of preference settings to install the NerveCenter database from a remote machine.

If you have not already done so, you'll need to install NerveCenter either on the SMS host machine or on a system that is accessible to and shareable with the SMS host. The files you will use in the following procedure are set up during the installation process.

TO CREATE AN SMS PACKAGE ON THE SMS HOST THAT CAN BE USED TO PERFORM REMOTE DATABASE INSTALLATIONS

1. If NerveCenter is running on the server that's your intended database destination, bring NerveCenter down.
2. Create a new directory in the NerveCenter directory structure on your SMS host to contain all files required for this process. The directory must be shareable on a host that the SMS server can access. For example, you could create a directory called InDB under Sms.
3. Copy the following files to your new directory:

From the NerveCenter **Bin** directory:

- ◆ InstallDB.exe
- ◆ SerializeDB.exe
- ◆ NCPperl*.dll

From the NerveCenter **Db** directory:

- ◆ NCScript.sql
- ◆ InstallDB.idb
- ◆ *Database.asc* (substitute the name of your exported database file, NCEExport.asc, for example)

From the NerveCenter **Sms** directory:

- ◆ InstDB.bat
- ◆ InstallDB.pdf

These files are in directories set up as a result of the NerveCenter installation. They are not accessible from the NerveCenter CD-ROM.

4. Edit **InstallDB.idb**.

5. Edit **InstDB.bat**.

You need to modify the parameters for the **installdb.exe** command to specify the operation type, and database type. See *Creating your Database from the Command Line on page 77* for a description of the command-line options.

6. Use the SMS Administrator to create a new package and to import the **InstallDB.pdf** file.

Your new database and data source are created on the destination server based on the contents of your exported database file name.

Configuring NerveCenter Remotely

You can use the utility **ImportUtil.exe** to copy Server configuration information to a NerveCenter Server.

If you have not already done so, you'll need to install NerveCenter either on the SMS host machine or on a system that is accessible to and shareable with the SMS host. The files you will use in the following procedure are set up during the installation process.

TO CREATE AN SMS PACKAGE ON THE SMS HOST THAT CAN BE USED TO PERFORM REMOTE DATABASE INSTALLATIONS

1. Create a new directory in the NerveCenter directory structure on your SMS host to contain all files required for this process. For example, you could create a directory called **ImpUtil** under **Sms**.

2. Copy the following files to your new directory:

From the NerveCenter **Bin** directory:

- ◆ **ImportUtil.exe**

From the NerveCenter **Sms** directory:

- ◆ **ImpUtil.ini**
- ◆ **ImpUtil.pdf**

These files are in directories set up as a result of the NerveCenter installation. They are not accessible from the NerveCenter CD-ROM.

3. Edit **ImpUtil.ini**.

ImpUtil.ini is the name of the file containing the Server configuration information and definitions. See *Reconfiguring a NerveCenter Server from the Command Line in Managing NerveCenter* for more details.

4. Use the SMS Administrator to create a new package and to import the **ImpUtil.pdf** file.
-

Removing NerveCenter includes removing the NerveCenter configuration information from your network management platform (unless you are running NerveCenter as a standalone network management application) and then removing the NerveCenter applications. See *Integrating NerveCenter with a Network Management Platform* for details about reconfiguring your network management platform.

**CAUTION**

You must be logged in as root (UNIX) or an administrator (Windows) to remove NerveCenter from a machine.

This chapter includes the following sections:

Section	Description
<i>Removing NerveCenter from a UNIX Machine on page 86</i>	Describes how to run the UNIX shell script to remove NerveCenter applications.
<i>Removing NerveCenter from a Windows Machine on page 88</i>	Describes how to run the unInstallShield program to remove NerveCenter applications.

Removing NerveCenter from a UNIX Machine

You can remove one or more of the NerveCenter applications by running a simple script that deletes the appropriate NerveCenter files, executables, and directories.

**NOTE**

If NerveCenter was integrated with a network management platform, you must have reconfigured your network management platform before you uninstall the software. See *Integrating NerveCenter with a Network Management Platform*.

TO REMOVE NERVECENTER FROM A UNIX MACHINE

1. If you haven't done so already, shut down all NerveCenter processes.
2. Navigate to *install_directory/nc/install*.
3. Type the following and then press Enter:

```
./uninst.sh
```

The script begins to run.

4. Press Enter as instructed by the script until you reach the prompt that lists the components you can remove.
5. At the following prompt, type the letter for each component you want to remove (separating each letter with a space) and then press Enter.

```
Enter your choice [1]
```

6. If you have platform integration installed, type the letter for each platform integration component you want to remove (separating each letter with a space) and then press Enter.

```
Enter your choice [1]
```

7. If you are removing the server but you want to keep your database, type *y* at the following prompt and press Enter.

```
Do you want to retain the database? [n]
```

8. If you are removing the server but you want to keep your MIB, type *y* at the following prompt and press Enter.

```
Do you want to retain MIB? [n]
```

9. If you are removing the server but you want to keep your log files, type *y* at the following prompt and press Enter.

Do you want to retain the log files? [n]

**NOTE**

If you did not shut down all NerveCenter processes, the script lists them, then quits. If that happens, you must kill the processes, then rerun UNINST.SH.

The script lists the files it deletes.

10. To delete the directory, press Enter at the following prompt.

```
Deleting directory : /opt/OSInc. Continue? [y]
```

The script completes.

11. If you manually set up any environment variables to point to the NerveCenter installation directory, change them to point somewhere else.
12. If you are removing NerveCenter from this machine completely, delete the ncusers and nadmins users and groups, including the nervectr user.
13. If you are removing NerveCenter web support completely and the Web server is on a different machine, reconfigure the server to remove references to NerveCenter. See [Managing NerveCenter Web Integration in Managing NerveCenter](#) for details.

Your OpenService NerveCenter applications have been removed.

Removing NerveCenter from a Windows Machine

TO REMOVE NERVECENTER FROM A WINDOWS MACHINE

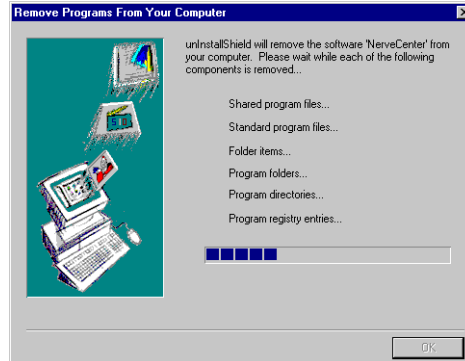
1. Back up any files you want to keep, including your database, custom MIBs, custom reports, or log files.
2. From the NerveCenter program group on the **Start** menu, choose **Uninstall NerveCenter**.
3. Select **OK** when asked whether you are sure you want to remove NerveCenter.
If Seagate Crystal Reports is installed on this machine, it will be removed as well.
4. Select **Yes** when asked whether you want to completely remove the selected application and all of its components.



NOTE

NerveCenter 3.8 and above does not install Crystal Reports.

The Remove Programs From Your Computer dialog box is displayed.



5. Select **OK**.
6. If unInstallShield was not able to remove all of the files, open the NerveCenter directory and evaluate whether you want to keep the files.
7. If you had a SQL database, do the following on SQL Server: delete or clear the SQL database, delete the data and log devices used with the database, and delete the files used by the data and log devices.

8. You may want to manually remove current user entries that are not automatically removed from the registry. However, if you remove them and then reinstall later, users will have to reconfigure their autoconnect preferences, filter settings, and so on.
-

Your NerveCenter installation is removed.

6

Removing OpenService NerveCenter

Index

I

A

- accepting, license agreement 31
- Access database
 - connecting 61
 - creating 54
- add/remove programs properties dialog box 29

C

- changing
 - destination directory 34
 - HP OpenView path 34
- completing, installation 41
- components
 - NerveCenter 9, 25, 65
 - selecting 32
- configuring 22, 42
 - database 81
 - platform adapter 33
 - remote 82
 - security 36, 37, 38
 - traps 37
- configuring, service 35
- connecting
 - Access database 61
 - existing database 57
 - SQL database 57
- connection string 57
- creating
 - Access database 54
 - database, from the command line 77
 - new database 46
 - SMS package 81, 82
 - source directory 67
 - SQL database 49

D

- database
 - configuring 81
 - connecting 57
 - creating 46
 - creating, from the command line 77
 - installing 38
 - modifying, from the command line 77
 - setting up 39, 47
 - setting up, Windows 45
 - database installation dialog box 39
 - destination directory dialog box 34
 - destination directory, changing 34
 - dialog box
 - add/remove programs properties 29
 - database installation 39
 - destination directory 34
 - folder selection 39
 - license agreement 31
 - license key 36
 - NerveCenter components 32
 - security options 36
 - server configuration 35
 - trap options 37
 - welcome 30
- documentation
- conventions 5
 - feedback 7

E

- editing, installation configuration file 68
- entering, license key 35, 36

F

- folder selection dialog box 39

H

- HP OpenView path, changing 34

I

- importutil 82
- INSTALL.SH 14
- installation
 - completing 41
 - configuration file 68
 - remote 65
 - silent 65
 - starting 30
- installation configuration file 68
- installation configuration file,
 - editing 68
- installation log
 - viewing on UNIX 21
- installation script
 - running automatic on UNIX 18
 - running interactive on UNIX 14
 - running to reconfigure, UNIX 22
- installing
 - after installation 22, 42
 - database 38
 - database, remote 81, 82
 - preparation 10, 27
 - remote 75, 76
 - UNIX 9

L

- license agreement dialog box 31
- license agreement, accepting 31
- license key dialog box 36
- license key, entering 35, 36

- M**
- modifying, database, from the command line 77
- N**
- ncaccess.mdb 54, 79
 - ncinput 18
 - ncinst_log 21
 - NerveCenter components 9, 25, 65
 - NerveCenter components dialog box 32
- O**
- ODBC data source 57
 - online knowledgebase 8
- P**
- platform adapter, configuring 33
 - post-installation configuration steps 22, 42
 - preparing to install 10, 27
 - prerequisites for installing
 - UNIX 10
 - Windows 27
 - program folder, selecting 39, 40
- R**
- remote
 - configuration 82
 - installation 75, 76
 - remote database installations 81, 82
 - remote installation 65
 - removing NerveCenter
 - UNIX 86
 - Windows 88
 - running
 - installation script automatic on
 - UNIX 18
 - installation script interactive on
 - UNIX 14
 - installation script to reconfigure,
 - UNIX 22
 - Setup, from command line 75
 - Setup, Windows 25
- S**
- security options dialog box 36
 - security, configuring 36, 37, 38
 - selecting
 - components 32
 - program folder 39, 40
 - server configuration dialog box 35
 - service, configuring 35
 - setting up
 - database 39, 47
 - database, Windows 45
 - Setup, starting 29
 - setup.iss 68
 - silent installation 65
 - SMS host 81, 82
 - SMS package, creating 81, 82
 - SNMP v3 (Windows) 37
 - SNMP v3 trap options (UNIX automatic script) 20
 - SNMP v3 trap options (Windows silent install) 74
 - source directory, creating 67
 - SQL database
 - creating 49
 - SQL database, connecting 57
 - starting
 - installation 30
 - Setup 29
- T**
- technical support
 - contacting 7
 - educational services 7
 - professional services 7
 - Trap Options dialog box 37
 - traps, configuring for (Windows) 37
- U**
- uninst.sh 86
 - uninstall
 - UNIX 86
 - Windows 88
- V**
- viewing
 - installation log on UNIX 21
- W**
- welcome dialog box 30

Installation Quick Reference for NerveCenter 4.1.03

Before you install OpenService NerveCenter, use the following checklists to make sure you meet the prerequisites:

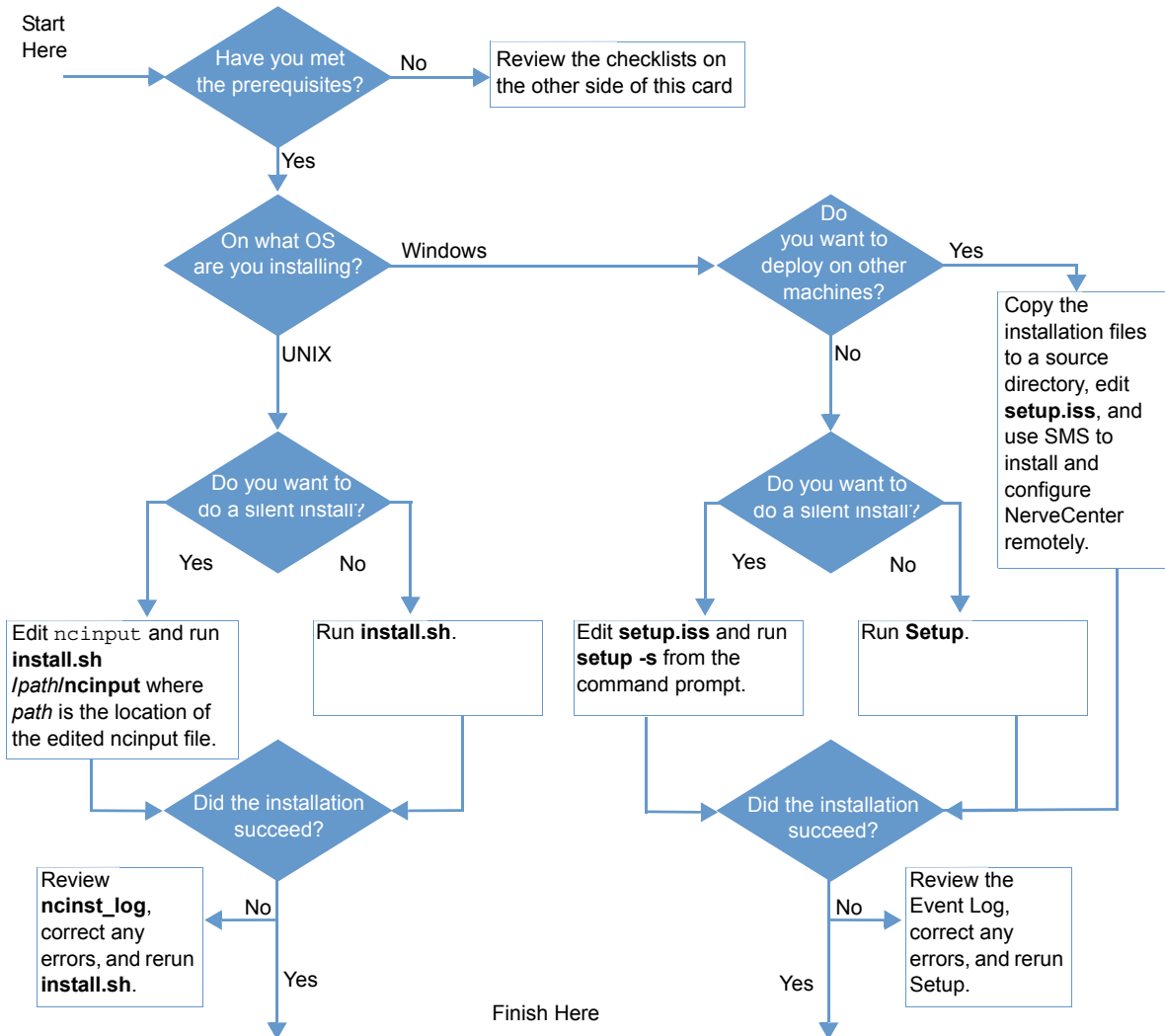
UNIX Installation Checklist

- The machines on which I am installing meet the system requirements (see the *Release Notes*).
- If I am upgrading, I have read *Upgrading NerveCenter*.
- I am logged in as root.
- I can access and write to the directory in which I want to install NerveCenter.
- I have created the `ncadmins` and `ncusers` groups, and the `nervectr` user, who is a member of `ncadmins`. (Do not do this if you are using NIS.)
- If I am installing on HP-UX, I have made sure that HP Services, `nfile`, and `maxfiles` are configured appropriately.
- If I am overwriting an older version of NerveCenter, I have exported any models I might need to use with this version later.
- If I am overwriting an existing version of NerveCenter, I have backed up all files I may have modified (`mibcomp.txt`, `*.mib`, `*.ncdb`, and so on).
- If I am overwriting an existing version of NerveCenter, I have stopped all NerveCenter and `Wind/U` processes.
- If I am integrating NerveCenter with HP OpenView, `OpenView` and `ovtrapd` are running on this machine.
- If I am integrating NerveCenter with IBM Tivoli TME, it is installed on this machine.
- If I am integrating NerveCenter with a Web server, I am familiar with its location and configuration files.

Windows Installation Checklist

- The machines on which I am installing meet the system requirements (see the *Release Notes*).
- If I am upgrading, I have read *Upgrading NerveCenter*.
- If I am upgrading and have an Access database, I have serialized my database before removing my old version of NerveCenter.
- I am logged in as Administrator or as a member of the Administrators group.
- I can access and write to the directory in which I want to install NerveCenter.
- The SNMP service is installed and running.
- If I am using MS Trap as my trap source, the SNMP Trap service is installed and running.
- If I am installing SNMP v2c/v3 support, the SNMP Trap service is disabled.
- If I am installing the server, the machine on which I am installing it has a fixed IP address.
- If I am going to use an SQL database, SQL 6.x or 7.x is installed and running.
- If I am going to use an SQL database, I have an account with system administrator (sa) rights.
- If I am overwriting an older version of NerveCenter, I have exported any models I might need to use with this version later.
- If I am overwriting an existing version of NerveCenter, I have backed up all files I may have modified (`mibcomp.txt`, `*.mib`, `*.ncdb`, and so on).
- If I am overwriting an existing version of NerveCenter, I have stopped all NerveCenter applications and services.
- If I am integrating NerveCenter with HP OpenView, `HP OpenView` and `ovtrapd` are running on this machine.
- If I am integrating NerveCenter with CA Unicenter TNG, it is installed on this machine.
- If I am integrating NerveCenter with a Web server, I am familiar with its location and configuration files.

Windows and UNIX Installation Flowchart



1. If you haven't already installed a database (NT only), do so now. Use DBWizard as described in *Installing NerveCenter*.
2. Add users to the appropriate user groups, unless you opted not to use security (NT only). See *Managing NerveCenter*.
3. If you are ready to configure NerveCenter, start the server, connect from the Administrator, and enter your license key (if necessary) and configure your options. See *Managing NerveCenter*.
4. If you installed platform integration, configure your network management platform appropriately. See *Integrating NerveCenter with Network Management Platforms*.
5. If you installed web support, make sure users have access to the Web server. Configure your web server to map to the NerveCenter web client files, if necessary. See *Managing NerveCenter*.

OpenService Software License Agreement

This Software License and Services Agreement ("Agreement") is between OpenService, Inc., a Delaware corporation having its principal place of business at 100 Nickerson Road, Suite 100, Marlborough, MA 01752 ("OpenService"), and Your Company and its Affiliates (as later defined; collectively, "Customer"). This Agreement establishes the terms under which OpenService will license certain of its software products and provide support and other software-related services to Customer. This Agreement consists of these Standard Terms and Conditions and the OpenService Annual Support Policy which will be provided under separate cover.

OpenService, Inc. Standard Terms and Conditions

In consideration of the mutual promises and upon the terms and conditions set forth below, the parties agree as follows:

1. DEFINITIONS

- 1.1. **"Software"** shall refer to any OpenService software application or suite of applications including without limitation Modules, that may be delivered to Customer either with the initial delivery of the software or any time thereafter or any subsequent Order Form, Updates and Subscription Software (only available to the extent Customer has subscribed and paid for this option), and any embedded programs of OpenService's licensors, all in object code format only, including all copies in whole or part, backups and related documentation.
- 1.2. **"Module(s)"** shall refer to the modules described on any Order Form.
- 1.3. **"Update(s)"** shall refer to any and all patches, bug fixes, workarounds, upgrades and updates specific to a Software application that are customarily provided at no additional cost to OpenService customers who have contracted for Annual Support Services with respect to that Software. The term "Update" does not include new modules added to a Software suite where such modules offer discrete new functionalities in addition to or together with the licensed Software applications, or any release, option, future product, or software that OpenService licenses separately or offers only for an additional fee.
- 1.4. **"Services"** shall refer to any services relating to the Software and provided by OpenService, including, without limitation, Annual Support Services and Professional Services.
- 1.5. **"Annual Support Services"** shall refer to the services provided under OpenService's then current standard or premium Support Services policy, as elected by Customer. A copy of OpenService's current Support Services policy will be shipped under separate cover upon shipment of software.
- 1.6. **"Professional Service(s)"** shall refer to the installation, training and/or other professional services elected by Customer.
- 1.7. **"Subscription Software"** shall refer to software that is made generally available only to customers of OpenService that have subscribed to and paid for this option.
- 1.8. **"Custom Development(s)"** shall refer to any and all materials provided to Customer by OpenService in the course of performing Professional Services.
- 1.9. **"Order Form"** shall refer to the OpenService document by which Customer orders Software and Services.
- 1.10. **"Node(s)"** shall refer to workstation or server Agent. You may install and use only the Software for which you have received a valid license key code (serial number) from OpenService or its distributors, to manage up to the number of Nodes specified in your purchase documentation. Your license key code (serial number) may only be installed in a single system at any one time. You may use the Software and related documentation on only as many servers as you have purchased licenses.
- 1.11. **"Affiliate"** shall refer to any legal entity (such as a corporation, partnership, or limited liability company) that is controlled by Customer. For purposes of this definition, "control" means (i) beneficial ownership of at least fifty percent (50%) of the voting securities of a corporation or other business organization with voting securities or (ii) a fifty percent (50%) or greater interest in the net assets or profits of a partnership or other business organization without voting securities.

- 1.12. **"Specifications"** shall refer to OpenService's specifications for particular Software applications in effect on the date of the applicable Order Form.

2. GRANT OF LICENSE

- 2.1. **License Grant.** Subject to the terms of this Agreement, OpenService grants to Customer a nonexclusive, nontransferable license under OpenService's intellectual property rights: (i) to use the Software and Custom Developments, if any, for Customer's internal business purposes in connection with the number of Modules and number of Devices for which license fees have been paid and at the locations specified on the Order Form; (ii) to have system integrators implement the Software for the Customer; and (iii) to make one copy of the Software and Custom Developments including related documentation for archival purposes. OpenService agrees to provide cold and hot back-up copies of Software as listed on its then current price list. Customer acknowledges that that certain Software applications may include "copy lock" protection and/or require an "enabling key," which shall be provided to Customer by OpenService or its licensors for purchased licenses. This is a license agreement and not an agreement for sale. All rights not specifically granted will be reserved to OpenService and its licensors.
- 2.2. **Compliance.** On request, Customer will provide OpenService with a written statement, certified by an authorized representative of Customer, listing the number and type of Devices in use and under management in connection with the Software and any changes to the location of the Software. During the term of this Agreement and for three (3) years thereafter, OpenService will have the right, no more than once annually, to conduct and/or direct an independent accounting firm to conduct, during normal business hours and on reasonable notice, an audit of the appropriate records of Customer to verify this information. If the information supplied by Customer to OpenService proves to be inaccurate by more than five percent (5%) to OpenService's detriment, then the Customer will pay all costs of the audit as well as applicable license and support fees on a retroactive basis.

3. LICENSE RESTRICTIONS

- 3.1. **Restrictions.** Customer will not modify, translate, reverse engineer, decompile, disassemble or otherwise attempt to derive source code, or create derivative works based on the Software or Custom Developments, provided that, if required under applicable law, upon Customer's request, OpenService will provide information necessary for Customer to achieve interoperability between the Software or Custom Developments and other software for a nominal administrative charge. Customer may only use the embedded programs of OpenService's licensors with and as a part of the Software and/or Custom Developments and is prohibited from using such embedded programs for application development purposes or otherwise outside the scope defined in Section 2.1 of this Agreement.
- 3.2. **Third Parties.** Customer will not: (i) host the Software and/or Custom Developments for access by any third party; (ii) rent, lease, sublicense, or otherwise distribute the Software and/or Custom Developments to any third party; (iii) offer the Software and/or Custom Developments in connection with timesharing, facility management, or service bureau usage; or (iv) use the Software and/or Custom Developments to develop or modify applications or perform other programming tasks on behalf of Customer or any third party.
- 3.3. **Proprietary Markings.** Customer agrees to respect and not to alter, remove or conceal any patent, copyright, trademark, government restricted rights, trade name or other proprietary marking that may appear in connection with the Software or Custom Developments.

4. DELIVERY AND LICENSE KEYS

- 4.1. **Delivery; Updates.** Promptly after the Effective Date, OpenService will deliver to Customer one copy of the Software either electronically or on compact disk, at Customer's election, and related documentation. OpenService will also make available to Customer one copy of any Updates, if and when available, either electronically or on compact disk, pursuant to Annual Support Services.
- 4.2. **License Keys.** Customer acknowledges that the Software needs to be activated by identification codes. Customer will receive its license key through OpenService's website or FTP site using the unique license number provided to Customer in the Order Form.

5. PAYMENT

- 5.1. **License Fee.** In consideration of the licenses granted and Services provided under this Agreement, Customer agrees to pay OpenService the license and Services fees specified in each Order Form according to the payment terms therein. Concurrently with the execution of this Agreement, Customer will place a binding initial order for Software using the Order Form.
- 5.2. **Taxes.** Customer will pay all taxes (except taxes based on OpenService's net income) and customs duties, however designated, on amounts payable to OpenService.
- 5.3. **Payment.** Customer will pay OpenService for all Software and Services in U.S. Dollars within thirty (30) days of invoice.

6. WARRANTY AND DISCLAIMER

- 6.1. **Warranty.** OpenService warrants for thirty (30) days following delivery that: (i) the Software will operate substantially in accordance with the Specifications, provided that the Customer uses the Software in accordance with the Specifications (including without limitation recommendations for best practices in regard to Software configuration) and documentation and does not modify the Software; and (ii) the media on which the Software is delivered will be free from defects in workmanship.
- 6.2. **Sole Remedies.** In the event the Software fails to perform as warranted in Section 6.1(i) and Customer advises OpenService in writing of a reproducible error within the warranty period, OpenService will use commercially reasonable efforts to correct any defect in the Software. In the event that OpenService is unable to correct a defect within a reasonable time, Customer may return the Software and obtain a refund of any prepaid license fees. In the event the Software fails to perform as warranted in Section 6.1(ii), OpenService will replace the defective disk or other media. This Section 6.2 sets forth Customer's sole remedy, and OpenService's sole obligation, relating to performance of the Software and for breach of the warranties in Section 6.1.
- 6.3. **Disclaimer.** Except for the warranties in section 6.1, to the maximum extent permitted by applicable law, the software, custom developments and the services are provided by OpenService and its licensors without express or implied warranty of any kind, including without limitation, any warranty of merchantability, noninfringement or fitness for a particular purpose. OpenService specifically does not warrant that the software and/or custom developments will meet all of customer's requirements; that the operation of the software and/or custom developments will be error-free or uninterrupted; or that all errors or defects in the software will be corrected. Some jurisdictions do not allow the exclusion of implied warranties so the above exclusions may not apply to customer. This warranty gives customer specific legal rights. Customer may also have other rights that vary from jurisdiction to jurisdiction.
- 6.4. **Ultra-Hazardous Activities.** The software and/or custom developments are not designed, manufactured or intended for use in any environment in which the failure of software could lead to death, personal injury, or severe physical or environmental damage, including without limitation, in the design or operation of nuclear facilities, aircraft navigation or communication systems, air traffic control, direct life support machines, weapons systems or in the on-line control of equipment in any hazardous environment requiring fail-safe performance ("ultrahazardous activities"). OpenService and its licensors specifically disclaim any express or implied warranty of fitness for ultrahazardous activities. Customer represents and warrants that customer will not use, or allow others to use, any software or custom development for such purposes.
- 6.5. **Third Party Software and Materials.** Under no circumstances will OpenService, its affiliates or their respective officers, directors or employees be liable for any damages arising from Customer's use of any embedded programs, other software or materials developed or manufactured by OpenService licensors or other third parties, whether or not such programs, software or other materials were provided by OpenService hereunder. OpenService's only obligation to Customer will be to assign to Customer the indemnity, if any, that OpenService received from the third party licensor, if such indemnity is assignable. Customer is responsible for compliance with third party software license agreements.

7. OPENSERVICE INDEMNIFICATION.

- 7.1. **Indemnification.** OpenService will indemnify and defend Customer from any damages awarded against Customer by a court or other tribunal from which no appeal can be or is taken, or from final settlement to which OpenService has consented, arising out of any claim, action or suit ("Claim") that the Software infringes in the United States a patent, copyright or trade secret of any third party, provided that: (a) Customer notifies OpenService promptly in writing if any such Claim is threatened or brought; (b) OpenService has the right to assume the sole defense of such Claim with counsel selected by OpenService; (c) Customer cooperates in the defense or settlement of such Claim as reasonably requested by OpenService, at OpenService's expense; and (d) OpenService has the option at its own expense and in its sole discretion, at any time with respect to any Claim threatened or brought, or any such determination of infringement, to: (i) procure for Customer the right to continue licensing such Software; (ii) replace or modify such Software so that it is non-infringing; or (iii) terminate this Agreement as to such Software, and upon return of the Software by Customer, refund pro rata any prepaid fees for such Software, based on three-year straight-line depreciation. OpenService will have no liability for costs incurred or settlements made without its consent. OpenService will have no liability for any Claim based on modification of the Software other than by OpenService, the use of a superseded release of Software if the infringement would have been avoided by the use of a current release made available to Customer, or use of the Software other than ordinary use in accordance with the Specifications, documentation and this Agreement. This Section states OpenService's entire obligation, and Customer's sole remedy, with respect to any Claim, brought or threatened, or any such determination of infringement.

8. LIMITATION OF LIABILITY

- 8.1. **Limitation of Liability.** To the maximum extent permitted by applicable law, the maximum cumulative liability of Customer and OpenService and its licensors for damages, to the other party hereunder, regardless of the form of legal action, whether in contract or in tort, including without limitation negligence, will in no event exceed the amount of fees paid by Customer under this Agreement, and if such liability relates to particular Modules or Services, the maximum liability will be limited to the payments received by OpenService for the particular Software application or Services that gave rise to the liability, except that no limitation on damages will apply to losses due to Customer's breach of the license or license restrictions, Section 12.9 (Export Control) or its warranty in Section 6.4 (Ultra-Hazardous Activities), or for either party's breach of Section 11 (Confidential Information).
- 8.2. **No Consequential Damages.** To the maximum extent permitted by applicable law, in no event will either party or OpenService's licensors be liable under this agreement for special, incidental, indirect or consequential damages, including, but not limited to, loss of profits, loss of revenue, loss of use or loss of data, even if advised of the possibility thereof, or, if reasonably foreseeable, incurred by the other party or claimed against the other party by any third party, except that no such limitation on damages will apply in the event of a breach by customer of the license or license restrictions, section 12.9 (export control) or its warranty in section 6.4 (ultrahazardous activities), or for either party's breach of section 11 (confidential information).

9. SERVICES

- 9.1. **Services.** In connection with the implementation, support and use of the Software by Customer, OpenService will provide Services to Customer as applicable at the rates specified in each Order Form under the terms of this Agreement.
- 9.2. **Ownership of Intellectual Property.** If Customer suggests any new features, functionality or performance for the Software that OpenService subsequently incorporates into the Software, such suggestions will be free from any confidentiality restrictions that might otherwise be imposed upon OpenService pursuant to Section 11 (Confidential Information). OpenService will own and Customer hereby agrees to assign and assigns to OpenService all right, title, and interest in the copyright, patent, trade secret and all other intellectual property rights that may be conceived, reduced to practice, created or developed by OpenService or Customer in the performance of Services under this Agreement, including without limitation Custom Developments and such Customer suggestions.

- 9.3. **Future Activities.** Customer acknowledges that OpenService and its employees, consultants or subcontractors may from time to time perform services for others or incorporate functionality in its Software that are similar or identical to Services performed for or a Custom Development created for Customer under this Agreement. So long as no Confidential Information of Customer is disclosed, OpenService will not be restricted in any way from developing or providing to others software, forms, materials, methodologies, modifications or services which are similar or identical to Services performed for, or Custom Developments created for, Customer, or be restricted in its use of personnel providing Services hereunder.
- 9.4. **Payment for Services.** OpenService reserves the right to discontinue the provision of any and all Services if payment is not received in accordance with the terms of this Agreement or any Order Form.
- 9.5. **Reimbursement.** Customer will pay or reimburse to OpenService all reasonable travel, accommodation and other out-of-pocket expenses incurred by OpenService, its employees, consultants or subcontractors in connection with OpenService's provision of Professional Services under this Agreement.
- 9.6. **Compensation on Termination of Services.** In the event of any termination of Services prior to completion, payment will immediately be due for performance rendered up to the effective date of such termination and for non-cancelable commitments, including expenses.

10. TERM; TERMINATION

- 10.1. **Term.** This Agreement will be effective from the Effective Date and will continue perpetually with respect to the Software licenses unless terminated in accordance with the provisions of this Section 10.
- 10.2. **Termination.** Upon any material breach of this Agreement by either party, the other party will have the right to terminate this Agreement and the licenses granted hereunder effective on thirty (30) days' notice; such termination will become automatically effective unless the breaching party has cured any material breach prior to the expiration of the thirty-day period. OpenService will also have the right, effective on notice, to immediately terminate this Agreement and the licenses granted hereunder if Customer: (i) files a petition in bankruptcy or insolvency, or for reorganization or the appointment of a receiver or trustee, (ii) is served with an involuntary petition against it in any insolvency proceeding that is not be dismissed within sixty (60) days after filing, (iii) makes an assignment for the benefit of creditors, or (iv) breaches Sections 2 (License Grant) or 3 (License Restrictions) of this Agreement.
- 10.3. **Consequences.** In the event of termination of this Agreement for any reason, Customer will promptly (i) discontinue all use of the Software and Custom Developments; (ii) erase or destroy any Software and Custom Developments contained in the computer memory or data storage apparatus; (iii) return to OpenService or destroy all copies of the Software, Custom Developments and OpenService Confidential Information; and (iv) certify in writing to OpenService, within thirty (30) days of termination of this Agreement that Customer has complied with the foregoing.
- 10.4. **Survival.** Termination of this Agreement will not limit either party from pursuing other remedies available to it, including injunctive relief, nor will termination relieve Customer of its obligation to pay all fees that have accrued or are otherwise owed by Customer under any Order Form. Prepaid fees are nonrefundable unless otherwise expressly provided in this Agreement. Sections 1, 2.2 (survives for three (3) years), 6.2, 6.3, 6.4, 6.5, 8, 9.2, 9.3, 10.3, 10.4, 11 and 12 hereof will survive expiration or any termination of this Agreement.

11. CONFIDENTIAL INFORMATION

- 11.1. **Confidential Information.** Each party may have access to confidential information of the other party, including without limitation, Software, Custom Developments and training materials (if any), and all other information that is identified in writing as confidential at the time of disclosure ("Confidential Information"). Each party agrees that it will use Confidential Information only in the performance of this Agreement and for no other purpose, will not disclose such Confidential Information to any third party (except as required by law or to that party's attorneys, accountants or other fiduciary advisors as reasonably necessary), and will take reasonable precautions to protect the confidentiality of such Confidential Information. Such reasonable precautions will include, but not be limited to, disclosing Confidential Information only to those employees who have a need to have access solely

for the performance of this Agreement and taking measures by instruction and agreement prior to disclosure to such employees to protect against unauthorized use or disclosure.

- 11.2. **Exclusions.** Confidential Information will not include information that: (i) is rightfully received by the receiving party from a third party without an obligation of confidentiality; or (ii) was publicly known at the time of disclosure to receiving party or becomes publicly known through no act or omission of the receiving party. If any Confidential Information is required to be disclosed by a judicial or governmental order, the receiving party will promptly notify the disclosing party and take reasonable steps to assist in contesting such order or in protecting the disclosing party's rights prior to disclosure.

12. GENERAL

- 12.1. **Provision of Notice.** Any notice given hereunder will be in writing and delivered by courier service or mailed by pre-paid registered mail, return receipt requested, addressed to the other party at the address on the Signature Cover Page. Any notice so delivered will be deemed to have been received by the addressee at the time and date when actually delivered or in any event within ten (10) days after sending in the manner provided. A party's notice address may be changed at any time effective on notice.
- 12.2. **Assignment.** Customer may not assign this Agreement or any rights or obligations arising under this Agreement without the prior written consent of OpenService, such consent not to be unreasonably withheld; provided, however, that such consent shall not be required if Customer assigns to an Affiliate, unless the Affiliate is a direct competitor of OpenService. OpenService may assign this Agreement and any rights or obligations hereunder. This Agreement will be binding on the successors and permitted assigns of the parties.
- 12.3. **Waiver.** The failure of either party to enforce in any one or more instances any of the terms of this Agreement will not be construed as a waiver of future performance of any such term. Waiver of any term will only be deemed to have been made if expressed in writing by the party granting the waiver.
- 12.4. **Severability.** If any provision of this Agreement is held by a court or other tribunal of competent jurisdiction to be illegal, invalid or unenforceable, that provision will be reformed, construed and enforced to the maximum extent permissible, and the remaining provisions will remain in full force and effect.
- 12.5. **Governing Law.** This Agreement will be governed by and construed in accordance with the laws of the Commonwealth of Massachusetts, without regard to its conflict of law principles. Subject to Section 12.6 (Arbitration), each party hereby irrevocably submits to the exclusive venue and jurisdiction of any federal or state court sitting in Boston, Massachusetts in any action, suit or proceeding brought against it by the other party under this Agreement. The UN Convention on Contracts for the International Sale of Goods does not apply.
- 12.6. **Arbitration.** The parties agree to submit any dispute arising under this Agreement (excluding disputes arising out of or relating to intellectual property) to binding arbitration in Boston, Massachusetts, under the then current Rules of Arbitration of the International Chamber of Commerce by one arbitrator appointed in accordance with said Rules. Judgment on the award rendered by the arbitrator may be entered in any court of competent jurisdiction. Notwithstanding the foregoing, at any either party may apply for injunctive or other temporary relief without breach of this arbitration provision.
- 12.7. **Entire Agreement.** This Agreement constitutes the entire understanding between the parties, and supersedes all prior discussions, representations, understandings or agreements, whether oral or in writing, between the parties with respect to the subject matter of this Agreement. The terms of this Agreement will have no force or effect with respect to any claim based on the use of the Software outside the scope of the licenses and rights expressly granted herein. The preprinted provisions of Customer's purchase order will not apply, and the provisions set forth herein will prevail. In the event of any conflict between the terms of these Standard Terms and Conditions and the terms set forth on any Order Form or any other Schedule, the terms of these Standard Terms and Conditions will prevail, unless expressly provided otherwise. Any amendment to this Agreement must be in writing and signed by an authorized representative of each party.

- 12.8. **U.S. Government Restricted Rights.** In the event that Customer is an agency of the United States Government, or that the license granted hereunder is pursuant to a contract with either a defense or civilian agency of the United States Government, Customer agrees that the Software is provided with restricted rights. Use, duplication or disclosure by the Government is subject to the restrictions as set forth in subparagraph (c)(1)(ii) of the Rights in Technical Data and Computer Software clause at DFARS 252.227-7013 or the restrictions set forth in subparagraphs (c)(1) and (2) of the Commercial Computer Software Restricted Rights clause at 48 CFR 52.227-19, as applicable, or in successor provisions, as well as the limitations set forth herein. Manufacturer is OpenService, Inc., 100 Nickerson Road, Suite 100, Marlborough, MA 01752.
- 12.9. **Export Control.** Customer acknowledges that it is subject to United States laws and regulations controlling the export of technical data, computer software and other commodities and agrees not to export or allow the export or re-export of such data, software or other commodities in violation of such laws and regulations.
- 12.10. **Independent Contractors.** The parties to this Agreement are and will remain independent contractors. Nothing herein will be construed to create a partnership or joint venture between them, and neither will have the power or authority to bind or obligate the other in any manner not expressly set forth herein.
- 12.11. **Headings.** The headings used in this Agreement are for ease of reference only and will not be used to interpret any aspect of this Agreement.
- 12.12. **References.** All references in this Agreement to the "sale" or "purchase" of Software or Custom Developments means the granting or obtaining of certain license rights to use such software.
- 12.13. **Force Majeure.** Neither party shall be in default of its obligations (other than the payment of money) to the extent its performance is delayed or prevented by causes beyond its reasonable control, including without limitation, acts of God, earthquake, flood, embargo, riots, sabotage, utility or transmission disruption, failure or delay of suppliers, fire or labor disturbances.
- 12.14. **Press Releases; Use of Name.** OpenService may issue one or more press releases relating to the business relationship created by this Agreement and may use Customer's name in its general customer list in print and website materials.

Schedule B

OpenService Annual Support Services Policy - Standard

Provided that Customer has paid the applicable Annual Support Services fees as described on the applicable Order Form, OpenService will provide support for (a) the then current version of the Software enumerated in Order Forms, and (b) the immediately preceding version of such Software, but only for a period of six (6) months following the release of the then current version that is made generally available, provided that the Software is operated on a "Supported Platform." As of the Effective Date, Supported platforms are Linux, Solaris, and Windows. Such Software is referred to in this policy as the "Supported Software."

This document describes Open Service's Support Services policy, including Customer Support hours, information regarding Updates, how to open a support case, and how such cases are prioritized and escalated if necessary.

1. OpenService Customer Support Center

The OpenService Customer Support Center provides Customer with fast access to skilled specialists, who provide assistance answering post-installation technical questions and manage issues relating to Software use. There is no limitation on the number of calls or on the number of incidents reported.

Customer Support Center Access:

Location:	100 Nickerson Road Suite 100 Marlborough, MA 01752
Products:	All OpenService Software
Telephone:	508-597-5300 or 888-886-1085 Ext 1
Email:	techsupport@openservice.com
Normal Business Hours:	8 AM to 8 PM Eastern time Monday through Friday, excluding OpenService observed holidays
After-Hours Contact:	Severity P0 & P1 Issues (defined below) <ul style="list-style-type: none">◆ Access to support through Pager◆ OpenService Certified Engineer

KnowledgeBase: The OpenService KnowledgeBase service provides online access to known problems and resolutions and other information on general topics. Please visit the OpenService website at www.openservice.com to access the KnowledgeBase service.

Support: Support will include diagnosis and resolution of problems or performance deficiencies of the Supported Software according to the terms set forth in this Schedule B.

Remote Access: Customer will provide OpenService with the necessary remote access to Customer's Supported Platform so that OpenService may, at its option, provide remote diagnostic capability. OpenService does not assure performance of these Annual Support Services if such remote access is not provided by Customer when requested by OpenService.

Customer Efforts: Support will be provided to Customer only if, after reasonable commercial efforts, Customer is unable to diagnose and/or resolve problems or performance deficiencies of the Supported Software. Support will be provided to up to two designated OpenService-trained representatives of Customer.

2. Updates

Subject to the terms of this Agreement, OpenService will, from time to time, in its sole discretion and without obligation, make Updates to Supported Software available to Customer at no additional charge. If Customer transfers the Supported Software to a hardware and/or software platform that is not supported by OpenService at the time of such transfer, OpenService will continue to provide to Customer Updates that operate on a Supported Platform and OpenService will have no further obligation to fix errors that occur when the Software is run on any platform other than the Supported Platform.

3. Initiating an Incident

OpenService Customer Support follows a Call-back Support Model. However, at times when contacting OpenService Customer Support, Customer may speak immediately with a Level-1 Customer Support Engineer. For incidents having a large number of calls, Customer may be asked to log in support issues and to expect a return call.

Before logging an incident, to help our Customer Support Engineers resolve the situation as quickly and efficiently as possible, Customer should have the following information available:

- ◆ Customer contact name and company
- ◆ Customer's contact phone number and email address if Customer has one
- ◆ The name and version number of the Software product Customer is using
- ◆ The type of hardware Customer is using
- ◆ The version and level of operating system(s) Customer is using
- ◆ The problem description including step by step instructions required to reproduce the problem
- ◆ The full text of any associated error messages displayed
- ◆ It is always beneficial if there is a telephone near the system on which Customer can reproduce the problem.
- ◆ At times Customer may be asked for the product serial number also

OpenService uses an incident-tracking, password-protected product called TeamShare. When Customer initiates an incident, a unique reference number is generated that Customer should use to identify the incident in any future communications. This reference number will be used to track all communications and comments, and to assist with the progression and management of the incident until resolved.

4. Determining the Incident Severity and OpenService Response

OpenService will use reasonable commercial efforts to respond, as described below, to reported and verifiable errors in Supported Software so that such Software operates substantially in accordance with the applicable Specifications. Customer will be asked for an assessment of the severity of the problem at the time of the support call to assist OpenService in assigning a Severity code. OpenService recognizes five severity levels to classify support calls:

Severity P0: Critical Problem

Customer's use of the Supported Software is stopped or so severely impacted that the Customer cannot reasonably continue using the Supported Software, and there is no available workaround. OpenService Senior Support Engineer will contact Customer within one hour of notification during Customer Support's normal business hours and will engage development staff until an acceptable workaround is achieved, so that such Software operates substantially in accordance with the applicable Specifications.

Severity P1: High Problem

Major Supported Program features are unavailable with no acceptable workaround. Customer's use of the Supported Software is continuing but not stopped; however, there is a serious impact on the Customer's productivity and/or service levels. An OpenService Senior Support Engineer will contact Customer within four (4) hours of notification during Customer Support's normal business hours and will engage development staff until an acceptable workaround is achieved, so that such Software operates substantially in accordance with the applicable Specifications.

Severity P2: Medium Problem

Major Supported Software features are unavailable but a workaround is available, or optional or minor Supported Software features are unavailable with no reasonable workaround. Supported Software has minor loss of operational functionality. OpenService will provide initial response regarding the requested information or documentation clarification within eight (8) hours of notification during Customers Support's normal business hours and will consider a workaround, if appropriate, and Supported Software enhancements for inclusion in a subsequent Update.

Severity P3: Minimal Impact and/or Questions

Customer requests configuration or product capability information or documentation clarification regarding the Supported Software, but there is no impact on the operation of the Supported Software. Customer's use of the Supported Software is continuing and there is no work being impeded at the time. OpenService will provide initial response regarding the requested information or documentation clarification within five (5) days of notification during Customer Support's normal business hours.

Informational: Feature Request or Enhancement

As OpenService is committed to producing high quality software, and is always looking at ways to improve it. Subject to Section 9.2 of the Agreement, OpenService encourages Customers to suggest ways in which OpenService can improve its products. The format for suggestions is submission of an Enhancement Request through TeamShare. A Customer Support Center representative will notify Customer upon receiving a request, and will subsequently notify Product Management.

Escalation and Workarounds

OpenService's escalation procedures and objectives are further described on the matrix at Section 9 of this Schedule B. OpenService will provide Customer with a single copy of any fix or workaround on suitable media or electronically. Customer will distribute the fix or workaround to Supported Software as necessary, and OpenService reserves the right to close the incident after thirty (30) days of final recommendation, if no further communications are received from Customer within that time. If in any case of a Severity P0 or Severity P1 reported and verifiable error in Supported Software, OpenService is unable to provide an acceptable workaround, Customer may terminate this Agreement as to such particular Software, and upon return of that portion of the Software by Customer, Open Service will refund pro rata any prepaid fees for such Software, based on three-year straight-line depreciation.

5. Annual Support Fees

Annual fees for Support Services will be as set forth in the applicable Order Form. In the event Customer acquires additional Software pursuant to this Agreement, support fees will be payable on the same terms except that the first installment will be pro-rated for the balance of the annual period such that all subsequent fees for Annual Support Services will be payable on the same anniversary date for all Software.

OpenService may, at its sole option, reinstate lapsed Annual Support Services in accordance with its then current policies upon payment by Customer of all accumulated Annual Support Fees for the period during which Customer did not purchase Annual Support Services.

6. Excluded Services

The following services are outside the scope of OpenService's Annual Support Services:

- ◆ Service for Software that has been subject to unauthorized modification by Customer.
- ◆ Service for Software for which all required support releases have not been implemented by Customer.
- ◆ Third party software, hardware or data, or from the use of hardware not meeting our minimum recommended systems requirements.
- ◆ Service that becomes necessary due to: (i) failure of computer hardware or equipment or programs not covered by this Schedule or Schedule C; or (ii) any cause or causes beyond the reasonable control of OpenService, including, without limitation, floods, fires, loss of electricity or other utilities, negligence of Customer or any third party, operator error, improper use of hardware or software or attempted maintenance by unauthorized persons.
- ◆ Services performed at the Customer's site unless the parties mutually agree otherwise.

7. Changes in Support

OpenService reserves the right in its discretion to change the terms of its Annual Support Services and to discontinue Annual Support Services for any Software or Module, effective on one hundred eighty (180) days' notice.

8. Term and Termination

The initial support period will begin on the Effective Date and continue for one (1) year ("Initial Support Period"). The Initial Support Period will automatically be renewed for successive one (1) year periods (each, a "Renewal Support Period") unless: (i) Customer provides OpenService with written notice of termination at least thirty (30) days prior to the end of the Initial Support Period or the then-current Renewal Support Period, as applicable; or (ii) the Agreement or Annual Support Services are otherwise terminated. Annual Support Fees for each successive Renewal Support Period will increase from the immediately prior one-year support period by no greater than any increase in the Consumer Price Index as published in the Wall Street Journal within sixty (60) days prior to the new Renewal Support Period.

9. Escalation Matrix

	P0	P1	P2	P3	Informational
1 Hour	Discussion with Senior Support Engineer				
4 Hours	Notify Customer Support Manager	Discussion with Senior Support Engineer			
8 Hours	Alert Account Manager Discussion with Development Manager Notify Director of Customer Support	Notify Customer Support Manager	Discussion with Senior Support Engineer		
2 Days	Notify Sales Manager Update status Development Manager	Alert Account Manager			
3 Days	Escalate to VP Engineering/ VP Services Notify VP Sales	Notify Development Mgr Notify Director of Customer Support Notify Sales Management			
5 Days	Report status	Escalate to VP Development/ VP Services Inform VP Services		Discussion with Senior Support Engineer	
7 Days	Report status	Report status	Contact Product Marketing		
30 Days	Report status				
90 Days	Report status			Contact Product Marketing	Contact Product Marketing

Schedule C

OpenService Annual Support Services Policy - Premium

In addition to the standard Annual Support Services described in Schedule B, if Customer pays the applicable Premium Support fees, Customer will receive the following Premium Support Services:

- ◆ 24 x 7 Support: Premium Support email and telephone support is provided 24 hours a day, 7 days a week, 365 days a year, including holidays. 24 x 7 service may include pager service during off peak hours. For all other issues, standard support is provided as described in Schedule B. There are no limitations on the number of calls or on the number of incidents reported.
- ◆ Annual Support Fees: Annual fees for Support Services will be as set forth in the applicable Order Form.

About DBWizard

NerveCenter stores its data in a database that you can access using [OVPA \(OpenView Platform Adapter\)](#). You can use either Microsoft SQL Server or Microsoft Access for the database management system.

NerveCenter ships with a serialized file that you import into the database during installation. The serialized file contains the base set of NerveCenter objects, such as polls, masks, and alarms.

If you already have an existing NerveCenter 4.0 database, refer to [Upgrading NerveCenter](#). Make sure you understand the section that describes how to upgrade from your existing version.

To upgrade from versions prior to NerveCenter 4.0, you must first install NerveCenter 4.0 and upgrade the database for that version. Then you can upgrade to version 4.1.03. See the documentation that accompanies NerveCenter 4.0 for upgrade instructions.

Click below for more information:

- ◆ [Requirements for using DBWizard](#)
- ◆ [Using IDB files](#)
- ◆ [Creating an Access Database](#)
- ◆ [Creating a SQL Server Database](#)
- ◆ [Connecting to an Access Database](#)
- ◆ [Connecting to a SQL Database](#)
- ◆ [Upgrading an Access database](#)
- ◆ [Upgrading a SQL Server database](#)
- ◆ [Loading a serialized file into an Access database](#)
- ◆ [Loading a serialized file into a SQL Server database](#)



CAUTION

Before starting DBWizard, shut down all NerveCenter applications and processes that are running. You must be logged in as a system administrator or a member of the domain administrator's group to manipulate the database.

In addition to using DBWizard for database management, NerveCenter uses SerializedDB to export and import databases in serialized format. Refer to the Managing NerveCenter online guide or SerializedDB Help system for more information about SerializedDB.

Requirements for using DBWizard

Following are general requirements for using DBWizard:

- ◆ Before starting DBWizard, shut down all NerveCenter applications and processes that are running.
- ◆ You must be logged in as a system administrator or a member of the domain administrator's group to set up or manipulate the NerveCenter database.
- ◆ You must create the database on a machine on which the NerveCenter Server is installed. The server should not be running while you manipulate the database.

You do not need to have Access installed on the machine to create an Access database.

In order to create a SQL database, you must meet the following requirements:

- ◆ SQL Server must be installed and running on this or another host machine.
- ◆ You must have administrator logon rights to the SQL Server, including the right to create database devices.

Using IDB files

The IDB files are particularly useful if you need to create multiple databases on different machines. You can use the wizard to set up the first database, and then save your configuration settings and use them with the wizard or command-line version of DBWizard.

If you have already used DBWizard to create a database, there is an IDB file with the settings you entered during setup. This file is located in the NerveCenter installation\Db directory, and is called DBWizard.idb-unless you specified some other name. (DBWizard provides an option for naming the IDB file in the Finish dialog box.)

If you are creating your first database using DBWizard, you can use the default IDB file that is shipped with NerveCenter. This can reduce the amount of information you need to enter when you configure the database. The file that is shipped with NerveCenter is named InstallIDB.idb.

From the Start dialog box of DBWizard, select the **Load IDB File** button to load an existing file that contains default or customized installation settings.

Upgrading an Access database

If you have an existing NerveCenter 4.0 database, refer to [Upgrading NerveCenter](#). Upgrading to *Upgrading NerveCenter* instructs you to serialize your 4.0 database prior to installing NerveCenter 4.1.03.

If you . . .	Do the following
Serialized your 4.0 database prior to installing NerveCenter 4.1.03	Follow the procedure below to load that serialized file into your 3.8 Access database.
Did not serialize your 4.0 database prior to installing NerveCenter 4.1.03	<p>You must reinstall your old version of NerveCenter and serialize the database.</p> <p>Then, follow the procedure below to load that serialized file into your 4.1.03 Access database.</p>

To upgrade from versions prior to NerveCenter 4.0, contact OpenService.



CAUTION

Before upgrading a database, shut down NerveCenter if it is running, and back up your existing database.

TO LOAD THE SERIALIZED FILE INTO YOUR 4.1.03 ACCESS DATABASE

1. Select **Load Serialized File** and then select **Next**.
Enter the information about your database when you are prompted by the wizard. Provide the name of the database you are using for NerveCenter (NCAccess.mdb).
2. When prompted for the ODBC source, enter a new ODBC source for this database; do not use the same ODBC source you used with NerveCenter 4.0.
3. When asked to supply the serialized database file, browse and locate the serialized file you serialized. (Typically, this would be NCEExport40.asc.)
4. In the Finish dialog box, select **Create and Execute InstallDB** and then select **Next**.
5. Select **Finish**.

If SerializeDB cannot run the script successfully, an error message is displayed. Otherwise, your NerveCenter data has been upgraded.

Loading a serialized file into an Access database

In addition to using DBWizard for database management, NerveCenter uses SerializeDB to transfer data between a NerveCenter database and a serialized file. Once you've exported a NerveCenter database to a serialized file, DBWizard can load the serialized file into NerveCenter. Importing is useful for restoring or transferring databases.



NOTE

If you have an existing NerveCenter database prior to version 4.1.03, refer to [Upgrading NerveCenter](#). Make sure you understand the section that describes how to upgrade from your existing version.

TO LOAD A SERIALIZED FILE INTO AN ACCESS DATABASE

1. In the DBWizard Start dialog box, select the **Load Serialized File** button, and then select **Next**. The Select Database dialog box is displayed.
2. Select the **Microsoft Access** button, and then select **Next**. The ODBC for Access dialog box is displayed.
3. Enter the name of your data source in the **ODBC Data Source Name** field.
4. In the **Location of Access Database** field, enter the location of the database you want to use, and then select **Next**. The NerveCenter Paths and Files dialog box is displayed.
5. In the **Serialized Database File Name** field, enter the path and name of the ASCII (.asc) file you want to import into your database, and then select **Next**. The Finish dialog box is displayed.



CAUTION

If you specify NCEExport.asc, DBWizard overwrites the current database with the contents of the default file shipped with NerveCenter. If your intent is to concatenate behavior models rather than to overwrite to the existing database, use the Import facility instead.

6. To create a database with the settings that you just specified, check the **Create and Execute InstallDB** checkbox, and select **Next**. The Status dialog box is displayed.
7. Verify that the settings are correct, and then select **Finish**. If necessary, you can use the **Back** button to return to the previous dialog boxes and make corrections.

The wizard proceeds to create the specified database. The InstallDB Status Screen displays any problems that might have occurred during database creation. If any messages appear, note them so you can troubleshoot them before you try to create the database again.

8. When the installation is complete, select **OK** to exit the wizard.
-

Upgrading a SQL Server database

If you have an existing NerveCenter 4.0 database, refer to [Upgrading NerveCenter](#). Make sure you understand the section that describes how to upgrade from your existing version.

To upgrade from versions prior to NerveCenter 4.0, you must first install NerveCenter 4.0 and upgrade the database for that version. Then you can upgrade to version 4.1.03. See the documentation that accompanies NerveCenter 4.0 for upgrade instructions.



CAUTION

Before upgrading a database, shut down NerveCenter and back up your existing database.

TO UPGRADE YOUR DATABASE TO VERSION 4.1.03

1. In the DBWizard Start dialog box, select the **Run a SQL script** button, and then select **Next**.
The ODBC Data Source dialog box is displayed.
2. Provide a name for your data source in the **ODBC Data Source Name** field, and then select **Next**.
The SQL Server Information dialog box is displayed.
3. In the appropriate fields, supply the host name, user ID, password, and SQL database name, and then select **Next**.
The NerveCenter Paths and Files dialog box is displayed.
4. In the **NC SQL Script File Name** field, choose the **From40to41.sql**.
The script is located in the NerveCenter installation\Db folder.
5. Select **Next**. The Finish dialog box is displayed.
6. To create a SQL database with the settings that you just specified, check the **Create and Execute InstallDB** checkbox.



NOTE

If you need to create multiple databases on different machines, check the **Create InstallDB command file with name** checkbox, and provide a file name in the text box. DBWizard will create an IDB file that saves the settings you used in this installation. You can then load this new IDB file into the wizard when you run it on the other machines.

7. Select **Next**.

The Status dialog box is displayed.

8. Verify that the settings are correct, and then select **Finish**.

If necessary, you can use the **Back** button to return to the previous dialog boxes and make corrections.

The wizard proceeds to create the NerveCenter database.

9. When the upgrade is complete, select **OK**.

The first time you start the NerveCenter Server, the server will convert your database to the NerveCenter 4.1.03 format.

Loading a serialized file into a SQL Server database

In addition to using DBWizard for database management, NerveCenter uses SerializeDB to transfer data between a NerveCenter database and a serialized file. Once you've exported a NerveCenter 3.8 database to a serialized file, DBWizard can load the serialized file into NerveCenter. Importing is useful for restoring or transferring databases.



NOTE

If you have an existing NerveCenter database prior to version 4.1.03, refer to [Upgrading NerveCenter](#). Make sure you understand the section that describes how to upgrade from your existing version.

TO LOAD A SERIALIZED FILE INTO A SQL SERVER DATABASE

1. In the DBWizard Start dialog box, select the **Load Serialized File** button, and then select **Next**.
The Select Database dialog box is displayed.
2. Select the **Microsoft SQL Server** button, and then select **Next**.
The ODBC Data Source dialog box is displayed.
3. Provide a name for your data source in the **ODBC Data Source Name** field, and then select **Next**.
The SQL Server Information dialog box is displayed.
4. In the appropriate fields, supply the host name, user ID, password, and SQL database name, and then select **Next**.
The NerveCenter Paths and Files dialog box is displayed.
5. In the **Serialized Database File Name** field, enter the path and name of the ASCII (.asc) file you want to import into your database, and then select **Next**.
The Finish dialog box is displayed.



CAUTION

If you specify NCExport.asc, DBWizard overwrites the current database with the contents of the default file shipped with NerveCenter. If you are upgrading from NerveCenter 4.0 and you want to use the upgraded behavior models, rather than to overwrite to the existing database, use the

Import facility instead. You can import behavior models from NerveCenter Client.

6. To create a database with the settings that you just specified, check the **Create and Execute InstallDB** checkbox, and select **Next**.

The Status dialog box is displayed.

7. Verify that the settings are correct, and then select **Finish**. If necessary, you can use the **Back** button to return to the previous dialog boxes and make corrections.

The wizard proceeds to create the specified database. The InstallDB Status Screen displays any problems that might have occurred during database creation. If any messages appear, note them so you can troubleshoot them before you try to create the database again.

8. When the installation is complete, select **OK** to exit the wizard.
-

Select DBMS dialog box

Choose whether NerveCenter uses Microsoft SQL Server or Microsoft Access for a database management system.

You do not need to have Access installed on the machine to create an Access database.

If you choose SQL Server, you must meet the following requirements:

- ◆ You must be logged into the same domain on which SQL Server is running.
- ◆ You must have administrator logon rights to the SQL Server, including the right to create database devices. You will also need to know where the data and log device files will be located on SQL machines.

ODBC for Access dialog box

Enter the required [OVPA \(OpenView Platform Adapter\)](#) information in the following fields:

Field	Description
ODBC Data Source Name	Name the ODBC data source you want to use for this database.
Location of Access Database	Specify the file name and location of the Access database. Unless you are connecting to a specific pre-existing database, leave the default file NCAccess.mdb. If you select the Browse button, NerveCenter starts looking for the database in the installation\NerveCenter\Db directory.

Select **Next** to proceed to the next dialog box.

SQL Server Information dialog box

Provide the following information in the SQL Server Information dialog box:

Field	Description
SQL Server Host Name	The machine name of the host on which your SQL Server is running.
SQL Server User ID	Type the SQL Server administrator user ID. The user ID must already exist and must have the rights needed to create a database.
SQL Server Password	The SQL password for the SQL user. This field is always required, but may be blank for a user without a password.
SQL Database Name	The name of the database to be created. Caution: Providing the name of an existing database will cause that database to be overwritten.

Select **Next** to proceed to the next dialog box.

ODBC Data Source dialog box

Enter the [OVPA \(OpenView Platform Adapter\)](#) information in the following field:

Field	Description
ODBC Data Source Name	Enter the name of the ODBC data source you want to use for this database. This parameter is always required. If NerveCenter is already configured to use a database, the data source name defaults to the one currently used.

Select **Next** to proceed to the next dialog box.

SQL Data Device dialog box

Provide the following information in the SQL Data Device dialog box:

Field	Description
SQL Data Device Name	The name of the SQL data device to be used by the database.
Data Device File Path and Name	Full path and name for the SQL data device file. The default path provided is the same path used by the SQL master device. You can choose a different one, but the directory specified must exist. If the file already exists, the operation fails.
Data Device Size, in MB	Size of the data device, in megabytes. The suggested size is at least 10 MB. NerveCenter checks to see that the selected device has enough space.

Select **Next** to proceed to the next dialog box.

SQL Log Device dialog box

Provide the following information in the SQL Log Device dialog box:

Field	Description
SQL Log Device Name	Name of the SQL log device to be used by the database. You must use an existing directory, but the full name must not yet exist. Otherwise, the operation will fail.
Log Device File Path and Name	Full path and name of the file to use for the SQL log device.
Log Device in MB	The size of the log device in megabytes. The suggested minimum is 10 MB.

Select **Next** to proceed to the next dialog box.

NerveCenter Paths and Files dialog box

Provide the following required information in this dialog box:

Field	Description
NC SQL Script path and file name	The default script NCScript.sql creates the SQL database that NerveCenter will use. Use this script only when creating a new database.
Serialized Database file name	The default serialized file NCEExport.asc provides default values for your new database. Use this serialized file only when creating a new database. If you are importing a serialized file that you previously exported from this or another NerveCenter, enter or select the name of the file. Note: NerveCenter uses SerializeDB to export databases to ASCII format.

Select **Next** to proceed to the next dialog box.

Finish dialog box

You can choose two options:

Field	Description
Create InstallDB command file with name	<p>DBWizard creates an IDB file that saves the settings you used in this installation. You can then load this new IDB file into the wizard when you run it on the other machines.</p> <p>If you need to create databases on different machines and want to use the settings configured for this installation, you can create a custom IDB file. Do the following:</p> <ul style="list-style-type: none">◆ Select the Create InstallDB command file with name checkbox.◆ Provide a name for the IDB file in the field beneath the checkbox. <p>If you do not specify a command file name, your settings are saved in a file called Dbwizard.idb.</p>
Create and Execute InstallDB	<p>This command creates the database you configured for NerveCenter. The NerveCenter database is created and populated with polls, masks, alarms, property groups, and other features of behavior models.</p>

Select **Next** to proceed to the next dialog box.

Events Status dialog box

Before DBWizard creates the database you have specified, you are given the opportunity to double-check your setup parameters. Read the information displayed in this dialog box and, if it is correct, select **Finish**. Otherwise, you can select **Back** and make changes.

Open Database Connectivity (ODBC)

A Microsoft software standard supported by most database management systems, including Microsoft Access and Microsoft SQL Server. ODBC provides a single API for database (called data sources) access.